

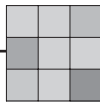
# Lifestone



Shown in Crosscut Travertine

*Inspired by Nature, Made Possible by...*

**CANCOS**  
TILE AND STONE



crema



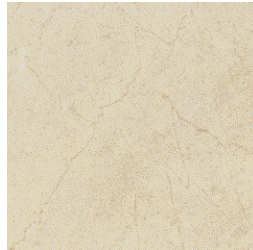
USA LICR 1224

| 12 x 24 |



USA LICR 18

| 18 x 18 |



USA LICR 12

| 12 x 12 |



USA LICR MOS22

| 2 x 2 |  
mosaic



USA LICR BN32

| 3 x 12 |  
bullnose

crosscut



USA LICR 1224

| 12 x 24 |



USA LICR 18

| 18 x 18 |



USA LICR 12

| 12 x 12 |



USA LICR MOS22

| 2 x 2 |  
mosaic



USA LICR BN32

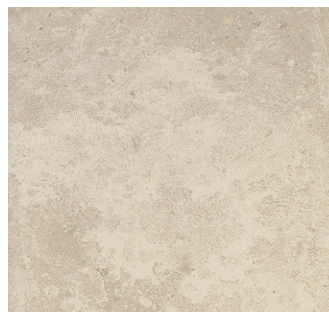
| 3 x 12 |  
bullnose

daino royal



USA LIDR 1224

| 12 x 24 |



USA LIDR 18

| 18 x 18 |



USA LIDR 12

| 12 x 12 |



USA LIDR MOS22

| 2 x 2 |  
mosaic



USA LIDR BN32

| 3 x 12 |  
bullnose

jura beige



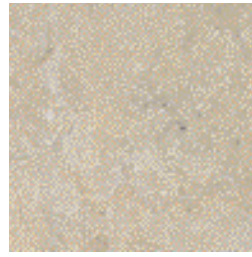
USA LIJB 1224

| 12 x 24 |



USA LIJB 18

| 18 x 18 |



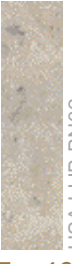
USA LIJB 12

| 12 x 12 |



USA LIJB MOS22

| 2 x 2 |  
*mosaic*



USA LIJB BN32

| 3 x 12 |  
*bullnose*



statuario



USA LIST 1224

| 12 x 24 |



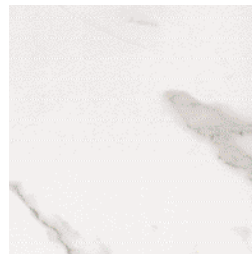
USA LIST BN32

| 3 x 12 |  
*bullnose*



USA LIST 18

| 18 x 18 |



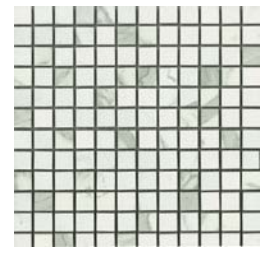
USA LIST 12

| 12 x 12 |



USA LIST 18

| 3 x 6 |



USA LIST MOS22

| 1 x 1 |  
*mosaic*

emperador marron



USA LIEM 1224

| 12 x 24 |



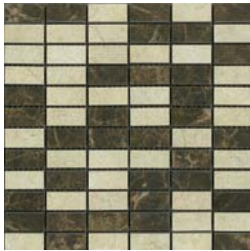
USA LIEM 18

| 18 x 18 |



USA LIEM 12

| 12 x 12 |



USA LIEM MOS21

| 2 x 1 |  
*mosaic*



| 3 x 12 |  
*bullnose*

### Suggested Applications

floor  wall  residential  light commercial  heavy commercial  exterior  pool

### Installation Suggestions

job-laid  no-interlocking  plank installation  straight  ratic  rectified  finish:  honed  semi-polished  other

### Shade Variation

V1 Uniform Appearance  V2 Slight Variation  V3 Moderate Variation  V4 Substantial Variation

3/8  1/2  3/4

### Slip Resistance

Coefficient of Friction	WET		DRY	
	smooth	rough	smooth	rough
residential	.6	.6	.6	.7
commercial	.8		.8	

Values: 0-0.50 Questionable  
 0.50-0.60 Conditionally Slip-Resistant  
 >0.60 Slip-Resistant

Class	Typical applications	Critical angle
<input type="checkbox"/> A	Beneficial, but mainly dry areas and walkways, dry changing areas	≥12°
<input type="checkbox"/> B	Shower rooms, pool surrounds, wet changing areas, disinfectant spray areas (plus all Class A areas)	≥19°
<input type="checkbox"/> C	Areas constantly under water, eg. steps into pools, footpaths, industrial pool surrounds, jacuzzis (plus all Class A/B areas)	≥24°

ASTM C-1028  
DIM 51097/51130

### Scratch Resistance

MOH'S SCALE  8  
 UNI EN ISO 10545.6

Mineral	Mineral
1. Talc (Talc)	6. Microcline (Glass, Glazed Tile)
2. Gypsum (Fingernail)	7. Quartz (Unglazed Porcelain)
3. Calcite (Fingert)	8. Topaz (Gemset)
4. Fluorite (Some Marbles)	9. Corundum (Ruby)
5. Apatite (Knife Blade)	10. Diamond (Diamond)

Industry standard ≤175 Swif

### Wear Resistance

PEI RATING UNI EN ISO 10545.7

Class 1: Walls only  
 Class 2: Resil floors w/minimal abrasive traffic  
 Class 3: Resil interiors normal use and foot traffic  
 Class 4: Light-medium commercial applications.  
 Class 5: Commercial applications.

### Stain Resistance

ASTM C1378-04  
 UNI EN ISO 10545.14

5: Removed after 5 minutes (not under running)  
 4: Removed by minimal cleaning (weak detergent)  
 3: Removed by mechanical cleaning (strong detergent)  
 2: Removed by immersion (24 hrs in suitable solvent)  
 1: Stain not removed

### Water Absorption

ASTM C-373  
 UNI EN ISO 10545.3

Absorbs 0-5%  Absorbs 5-9%  Absorbs 9-7%  Absorbs 7%+

Impervious Interior/exterior Frost Resistant  
 Vitrified Interior/exterior Frost Resistant  
 Semi-Vitrified Indoor use only  
 Non-Vitrified Indoor use only

### Breaking Strength

ASTM C648  
 UNI EN ISO 10545.4

Industry standard should be greater than 250 lbs or 50N/ANt2

### Facial Dimension

ASTM C499-09  
 UNI EN ISO 10545.02

	Standard	Tolerance	Limit
thickness	±5mm	±.5%	-.4
width	±6mm	±.5%	-.02
straightness	±.45mm	±.5%	.01
squareness	±.54mm	±.6%	.07
edges L/W	±1.1mm ±4.5mm	±.5%	.01

### Chemical Resistance

ASTM C650  
 UNI EN ISO 10545.13

Allowances for:  
 acid:  NO EFFECT  
 bases:  NO EFFECT  
 chemicals:  NO EFFECT

### Leed Information

REQUIREMENTS FOR COMMERCIAL INTERIORS/MEW CONSTRUCTION

Sustainable Sites	Allowances for:	1 Point	2 Points
<b>SS CREDIT 1</b> Minimum site disturbance Minimize site disturbance to at least 20%	<input checked="" type="checkbox"/>	<input checked="" type="checkbox"/>	<input type="checkbox"/>
<b>Energy &amp; Atmosphere</b> <b>EA CREDIT 4</b> Green Power Generate Power from renewable energy sources or use energy efficient equipment	<input type="checkbox"/>	<input type="checkbox"/>	<input checked="" type="checkbox"/>
<b>Indoor Environmental Quality</b> Low-Emitting Materials-Flooring Systems <b>IEQ CREDIT 3.1-7</b> Green Cleaning Reducing emissions or exposure to hazardous cleaning chemicals	<input checked="" type="checkbox"/>	<input checked="" type="checkbox"/>	<input type="checkbox"/>
<b>IEQ CREDIT 4.1</b> Low-Emitting Adhesives Reducing emissions from adhesives	<input checked="" type="checkbox"/>	<input type="checkbox"/>	<input type="checkbox"/>
<b>IEQ CREDIT 4.3</b> Low-Emitting Materials-Flooring Systems	<input checked="" type="checkbox"/>	<input type="checkbox"/>	<input type="checkbox"/>

### Materials & Resources

Allowances for:	1 Point	2 Points
<b>M&amp;R CREDIT 2</b> Construction Waste Management Recycling and reusing construction waste into new reusable materials	50% <input type="checkbox"/>	70% <input type="checkbox"/>
<b>M&amp;R CREDIT 4.1-4.2</b> Recycled Content The sum of pre-consumer plus 1/2 of the post-consumer recycled content of all materials	10% <input type="checkbox"/>	20% <input checked="" type="checkbox"/>
<b>M&amp;R CREDIT 5</b> Recycled Materials Materials manufactured within 500 miles of the project site	10% <input type="checkbox"/>	20% <input type="checkbox"/>

### Innovation in Design

**ID CREDIT 1**  
 Innovation in Design  
 Measure innovation, environmental performance

Type: **Color body Digital Technology**  
 Product Line: **Lifestone**

For Information and samples  
1-800-3-CANCOS  
customerservice@cancos.com

Due to printing and variations, colors shown could vary from actual sample.