

Apache



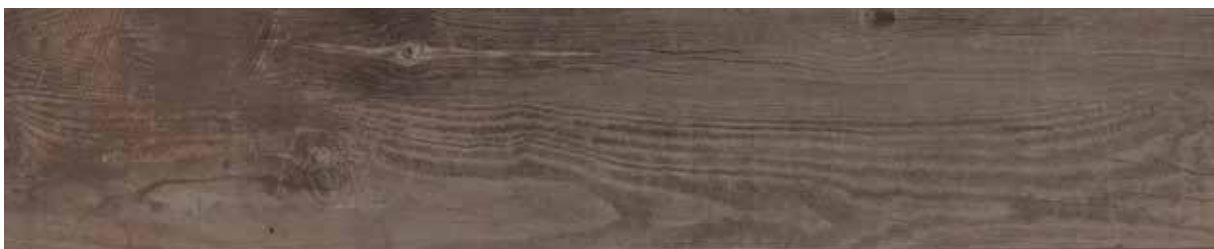
GLACIER

*Inspired By Nature,
Made Possible By...*

CANCOS
TILE & STONE



DOMAPBA840





DOMAPFR840



WOOD-LOOK PORCELAIN

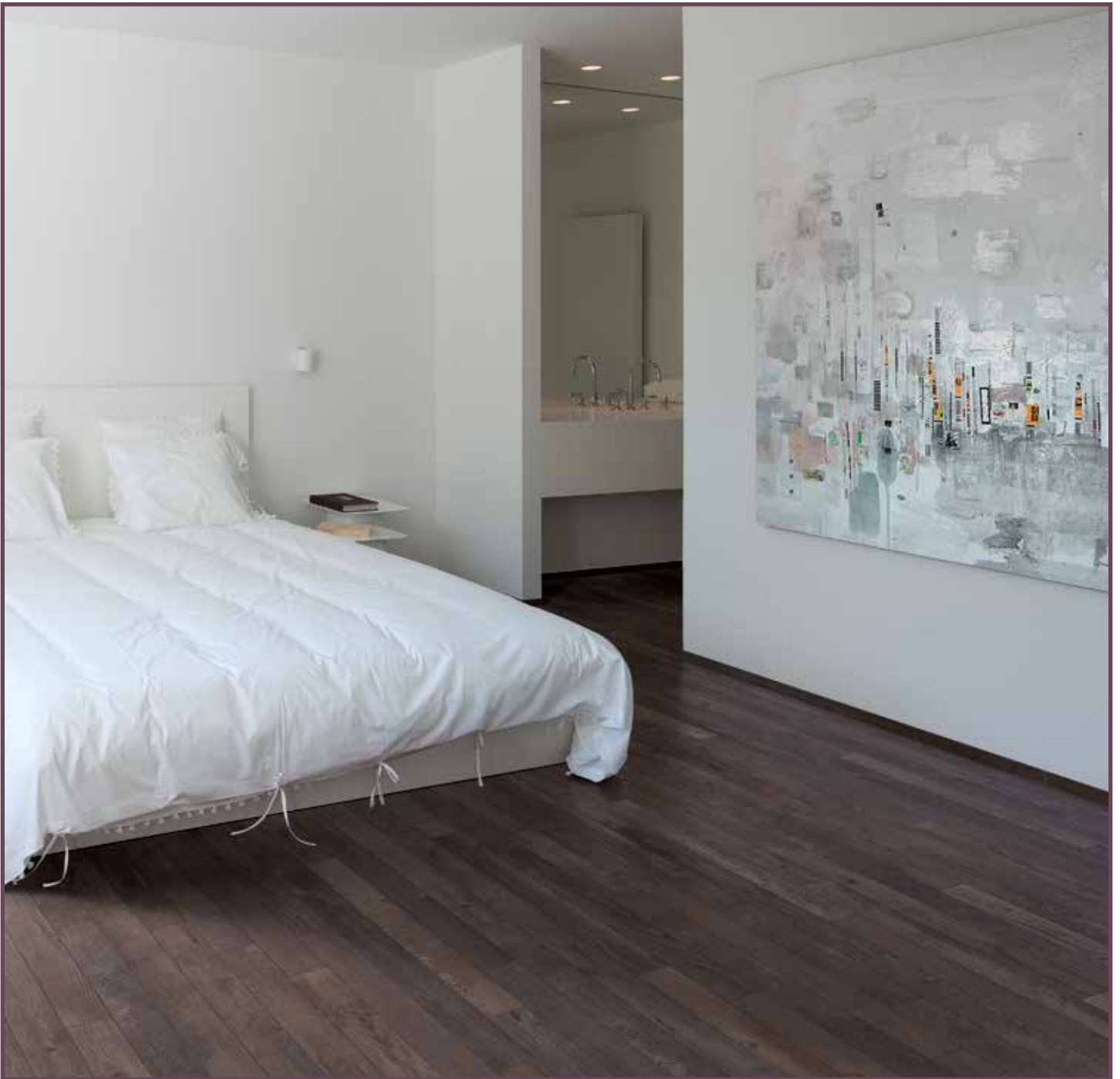
Glacier



DOMAPGL840



| 8 x 40 |



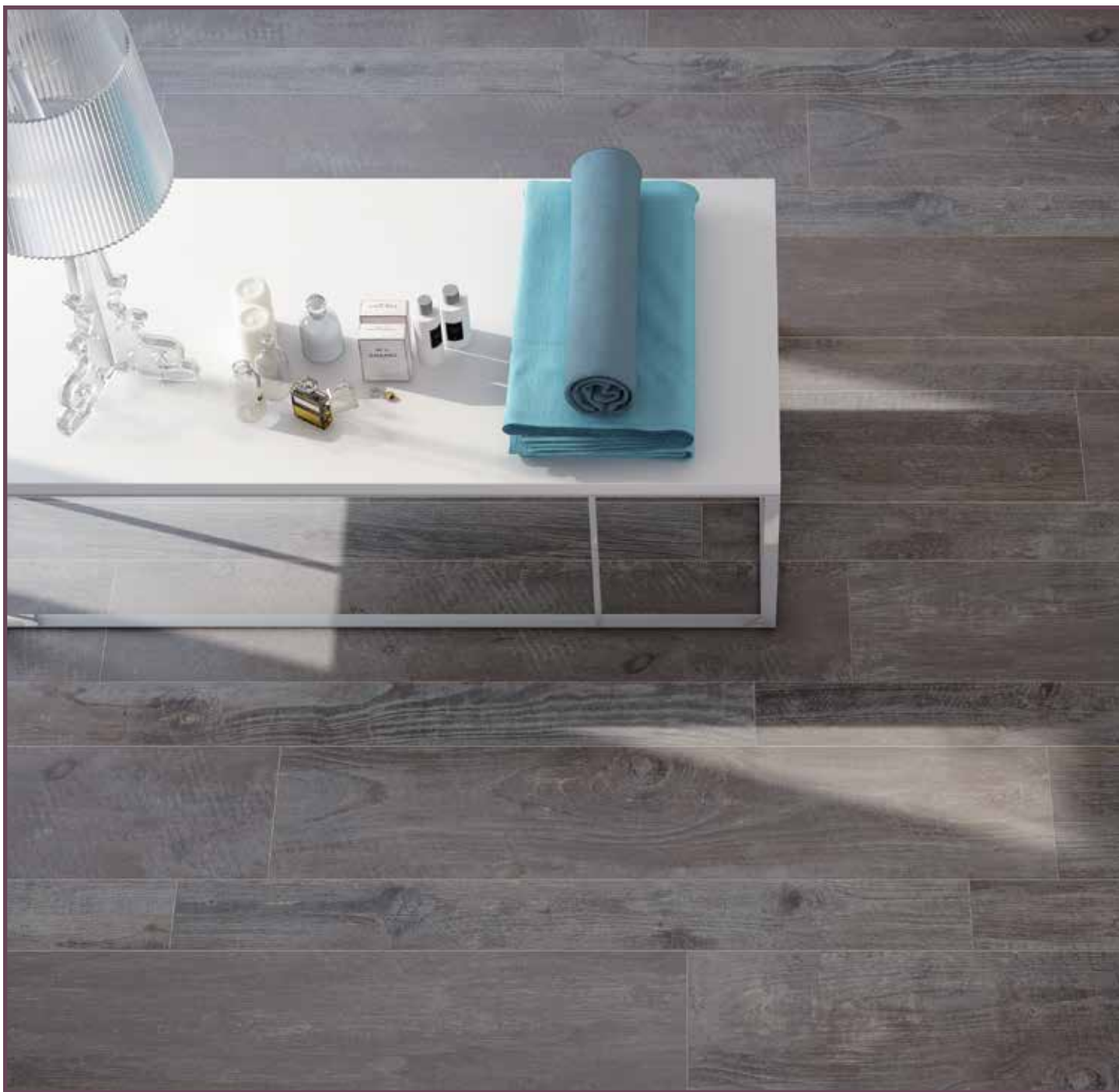
DOMAPLO840



| 8 x 40 |

WOOD-LOOK PORCELAIN

Summit



DOMAPSU840



| 8 x 40 |

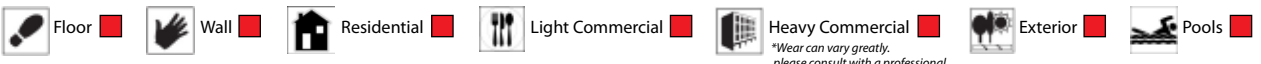


DOMAPTR840



| 8 x 40 |

Suggested Applications



Installation Suggestions

Plank Installation* Modular Setting Joint Size

*Install the offset the width of the plank. For professional installation, the use of leveling spacers for all plank and rectangular (ie. 12x24) format tiles is recommended.

EDGE: Straight/Pressed Rustic Rectified

FINISH: Matte Polished Structured
 Honed Semi-Polished

Porcelain Type

through-body color-bodied glazed unglazed double-loaded other _____

Shade Variation

V1 Uniform Appearance V2 Slight Variation V3 Moderate Variation V4 Substantial Variation

THICKNESS: 10mm # OF FACES: 60

Slip Resistance

DCOF Values Applications

<input checked="" type="checkbox"/> .65	0.42	Recommended Standard DCOF value for wet/dry commercial flooring
	0.65	Recommended Standard DCOF value for ADA ramps

ASTM C-1028 ANSI A137.1 DIN 51097/51130

DIN 51130 **R9: Industry Standard/ADA Requirements **R11: Recommended For Exteriors

R9* (3-10°) R10 (10-19°) R11** (19-27°)
 R12 (27-35°) R13 (>35°)

DIN 51097

Class	Typical Applications	Critical Angle
<input checked="" type="checkbox"/> A	Barefoot, but mainly dry aisles and walkways, dry changing areas	≥12°
<input checked="" type="checkbox"/> B	Shower rooms, pool surrounds, wet changing areas, disinfectant spray areas (plus all Class A areas)	≥18°
<input type="checkbox"/> C	Areas constantly under water, e.g. steps into pools, foot baths, included pool surrounds, jacuzzis (plus all Class A&B areas)	≥24°

Scratch Resistance

MINERAL

1. Talc (Talc)	6. Microline (Glass, Glazed Tile)
2. Gypsum (Fingernail)	7. Quartz (Unglazed Porcelain)
3. Calcite (Penny)	8. Topaz (Granite)
4. Fluorite (Some Marbles)	9. Corundum (Ruby)
5. Apatite (Knife Blade)	10. Diamond (Diamond)

Industry standard ≤175mm²

MOH'S SCALE UNI EN ISO 10545.6

Wear Resistance

PEI RATING UNI EN ISO 10545.7

- Class 1: Walls only
- Class 2: Residential floors w/minimal abrasive traffic
- Class 3: Residential interiors/light commercial traffic
- Class 4: Medium commercial applications
- Class 5: All commercial applications/heavy traffic

*Wear can vary greatly. please consult with a professional.

Stain Resistance

5: Removed after 5 minutes (hot water running)
 4: Removed by manual cleaning (weak detergent)
 3: Removed by mechanical cleaning (strong detergent)
 2: Removed by immersion (24 hrs in suitable solvent)
 1: Stain not removed

ASTM C1378-04 UNI EN ISO 10545.14 5

Water Absorption

ASTM C-373 UNI EN ISO 10545.3

	<input checked="" type="checkbox"/> Absorbs 0-.5%		<input type="checkbox"/> Absorbs .5-3%		<input type="checkbox"/> Absorbs 3-7%		<input type="checkbox"/> Absorbs 7% +
Impervious Interior/Exterior Frost Resistant		Vitreous Interior/Exterior Frost Resistant		Semi-Vitreous Indoor Use Only		Non-Vitreous Indoor Use Only	

Breaking Strength

Industry standard should be greater than 250 lbs or 50 N/MM²

ASTM C648 UNI EN ISO 10545.4 PASS

Facial Dimension

ASTM c499-09 UNI EN ISO 10545.02

	Standard	Tolerance	Result
flatness	±5mm	±.5%	PASS
thickness	±6mm	±.5%	PASS
straightness	±4.5mm	±.5%	PASS
squareness	±5.4mm	±.6%	PASS
sides L/W	±1.1mm ±4.5mm	±.5%	PASS

Chemical Resistance

ASTM C650 UNI EN ISO 10545.13

Allowances for: result

Acid PASS
 Bases PASS
 Chemicals PASS

Leed Information

REQUIREMENTS FOR COMMERCIAL INTERIORS/NEW CONSTRUCTION

Sustainable Sites	Materials & Resources	Innovation in Design
Site selection	1 Point	1-5 Points
SS CREDIT 1 Heat Island Effect-non roof Material with a solar reflectant index of at least 29.	1 Point	ID CREDIT 1 Innovation in Design Measurable exemplary environmental performance.
Energy & Atmosphere	1 Point	
EA CREDIT 4 Green Power: Products that optimize energy performance for floors and walls using thermal conductivity. BTU-FT	1 Point	
Indoor Environmental Quality	1 Point	
IEQ CREDIT 3.1-7 Green Cleaning: Reducing occupants exposure to hazardous cleaning chemicals.	1 Point	
IEQ CREDIT 4.1 Low Emitting Adhesives: Products less than 65 G/L VOC	1 Point	
IEQ CREDIT 4.3 Low Emitting Materials: Flooring systems.	1 Point	

M&R CREDIT 2 Construction Waste Management: Recycling salvaged construction waste in to new reusable materials.

M&R CREDIT 4.1-4.2 Recycled Content: The sum of post consumer plus 1/2 of the pre consumer reps at least 10-20% of total value of materials.

M&R CREDIT 5 Regional Materials: Materials manufactured within 500 miles of the project site.

50% 70%
 10% 20%
 10% 20%

Type: **Porcelain Stoneware**
 Product Line: **Apache**

*The marketing name for this product is property of Cancos Tile & Stone. This same product may be marketed under different names. *