

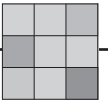
Lifestone



Shown in Crosscut Travertine

*Inspired by Nature,
Made Possible by...*

CANCOS
TILE & STONE

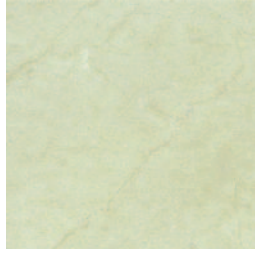


CREMA



USA LICR 1224

| 12 x 24 |



USA LICR 12

| 12 x 12 |

USA LICR 66

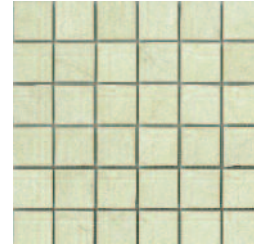


| 6 x 6 |

USA LICR 36

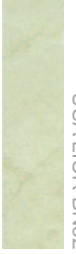


| 3 x 6 |



USA LICR MOS22

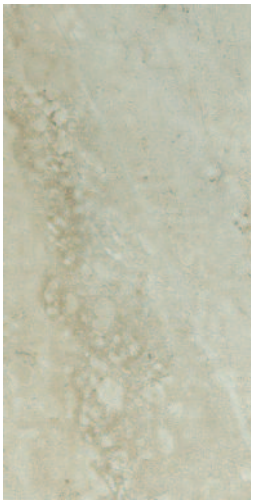
| 2 x 2 |
mosaic



USA LICR BN32

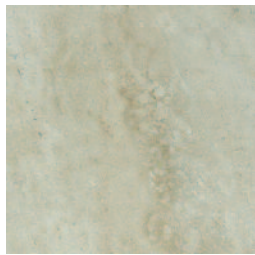
| 3 x 12 |
bullnose

CROSSCUT



USA LICR 1224

| 12 x 24 |



USA LICR 12

| 12 x 12 |

USA LICR 66

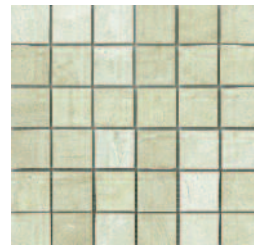


| 6 x 6 |

USA LICR 36



| 3 x 6 |



USA LICR MOS22

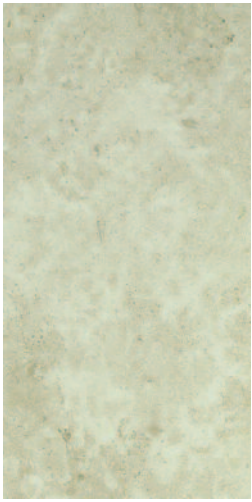
| 2 x 2 |
mosaic



USA LICR BN32

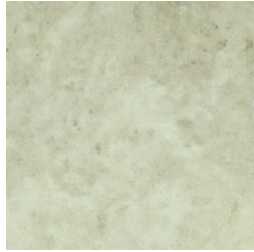
| 3 x 12 |
bullnose

DAINO ROYAL



USA LIDR 1224

| 12 x 24 |



USA LIDR 12

| 12 x 12 |



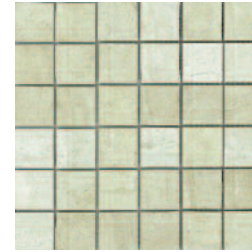
USA LIDR 66

| 6 x 6 |



USA LIDR 36

| 3 x 6 |



USA LIDR MOS22

| 2 x 2 |
mosaic



USA LIDR BN32

| 3 x 12 |
bullnose

STATUARIO



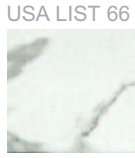
USA LIST 1224

| 12 x 24 |



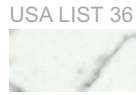
USA LIST 12

| 12 x 12 |



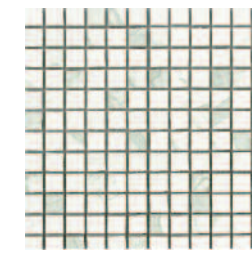
USA LIST 66

| 6 x 6 |



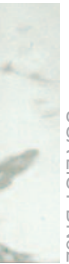
USA LIST 36

| 3 x 6 |



USA LIST MOS22

| 1 x 1 |
mosaic



USA LIST BN32

| 3 x 12 |
bullnose

Due to printing and variations, colors shown could vary from actual sample.

Suggested Applications

floor wall residential light commercial heavy commercial exterior pools

Installation Suggestions

joint size modular setting plank installation edge: S straight R rustic Re rectified finish: matte polished structured honed semi-polished other

Shade Variation

V1 Uniform Appearance V2 Slight Variation V3 Moderate Variation V4 Substantial Variation thickness: 3/8 1/2 5/8

Slip Resistance

accessible routes	Coefficient of Friction WET		Coefficient of Friction DRY		DIN 51130	DIN 51097		
	standard*	result	standard*	result		Class	Typical applications	Critical angle
routes	.6	.6	.6	.7	<input type="checkbox"/> R9* 3-10°	<input type="checkbox"/> A	Barefoot, but mainly dry aisles and walkways, dry changing areas	≥12°
ramps	.8		.8		<input type="checkbox"/> R10 10-19°	<input type="checkbox"/> B	Shower rooms, pool surrounds, wet changing areas, disinfectant spray areas (plus all Class A areas)	≥18°
					<input type="checkbox"/> R11 19-27°	<input type="checkbox"/> C	Areas constantly under water, e.g. steps into pools, foot baths, included pool surrounds, jacuzzis (plus all Class A&B areas)	≥24°
					<input type="checkbox"/> R12 27-35°			
					<input type="checkbox"/> R13 >35°			

Values: 0-0.50 Questionable, 0.50-0.60 Conditionally Slip Resistant, >0.60 Slip Resistant
 *Industry Standard/ADA Requirements

Scratch Resistance

Mineral
 1. Talc (Talc) 2. Gypsum (Fingernail) 3. Calcite (Penny) 4. Flourite (Some Marbles) 5. Apatite (Knife Blade)

Mineral
 6. Microline (Glass, Glazed Tile) 7. Quartz (Unglazed Porcelain) 8. Topaz (Granite) 9. Corundum (Ruby) 10. Diamond (Diamond)

Industry standard ≤175mm²

Wear Resistance

PEI RATING UNI EN ISO 10545.7

- Class 1: Walls only
- Class 2: Resid. floors w/minimal abrasive traffic.
- Class 3: Resid. interiors normal use and foot traffic.
- Class 4: Light-medium commercial applications.
- Class 5: Commercial applications.

Stain Resistance

5: Removed after 5 minutes (hot water running)
 4: Removed by manual cleaning (weak detergent)
 3: Removed by mechanical cleaning (strong detergent)
 2: Removed by immersion (24 hrs in suitable solvent)
 1: Stain not removed

Water Absorption

ASTM C-373 UNI EN ISO 10545.3

Absorbs 0-.5% Impervious Interior/exterior Frost Resistant

Absorbs .5-3% Vitreous Interior/exterior Frost Resistant

Absorbs 3-7% Semi-Vitreous Indoor use only

Absorbs 7%+ Non-Vitreous Indoor use only

Breaking Strength

Industry standard should be greater than 250 lbs or 50 N/MM²

Facial Dimension

ASTM c499-09 UNI EN ISO 10545.02

	Standard	Tolerance	Result
flatness	± 5mm	± .5%	.45
thickness	± 6mm	± .5%	.078
straightness	± 4.5mm	± .5%	.01
squareness	± 5.4mm	± .6%	.07
sides L/W	± 1.1mm / ± 4.5mm	± .5%	.01

Chemical Resistance

ASTM C650 UNI EN ISO 10545.13

Allowances for: acid NO EFFECT, bases NO EFFECT, chemicals NO EFFECT

Leed Information

Requirements	Points	Materials & Resources	1 Point	2 Points
Sustainable Sites Site selection SS CREDIT 1 Heat Island Effect-non roof Material with a solar reflectant index of at least 29.	1 Point	M&R CREDIT 2 Construction Waste Management: Recycling salvaged construction waste in to new reusable materials.	50% <input type="checkbox"/>	70% <input type="checkbox"/>
Energy & Atmosphere EA CREDIT 4 Green Power: Products that optimize energy performance for floors and walls using thermal conductivity. BTU-FT	1 Point	M&R CREDIT 4.1-4.2 Recycled Content: The sum of post consumer plus 1/2 of the pre consumer reps at least 10-20% of total value of materials.	10% <input type="checkbox"/>	20% <input checked="" type="checkbox"/>
Indoor Environmental Quality Low-Emitting Materials-Flooring Systems IEQ CREDIT 3.1-7 Green Cleaning: Reducing occupants exposure to hazardous cleaning chemicals.	1 Point	M&R CREDIT 5 Regional Materials: Materials manufactured within 500 miles of the project site.	10% <input type="checkbox"/>	20% <input type="checkbox"/>
IEQ CREDIT 4.1 Low Emitting Adhesives: Products less than 65 G/L VOC	<input checked="" type="checkbox"/>	Innovation in Design ID CREDIT 1 Innovation in Design Measurable exemplary environmental performance.		1-5 Points <input type="checkbox"/>
IEQ CREDIT 4.3 Low Emitting Materials: Flooring systems.	<input checked="" type="checkbox"/>			

Type: Color body Porcelain Digital Technology
 Product Line: Lifestone