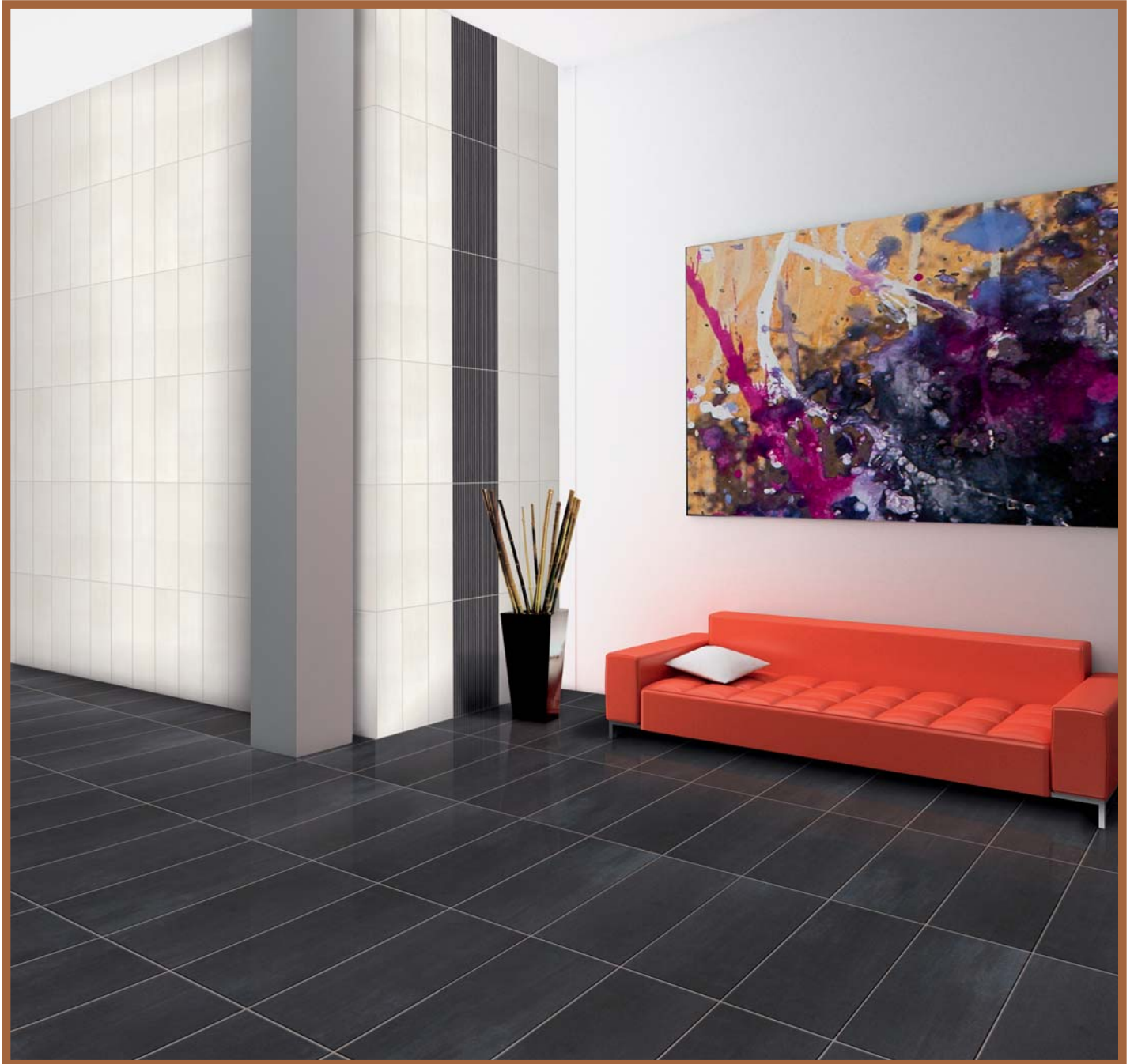


Brushstroke



Inspired by Nature, Made Possible by...

CANCOS

TILE AND STONE

Beige



| 12X24 |

USABRBE1224



| 6X24 |

USABRBE624



| 6X24 | *bullnose*

USABRBE624BN

Ebony



| 12X24 |

USABREB1224



| 6X24 |

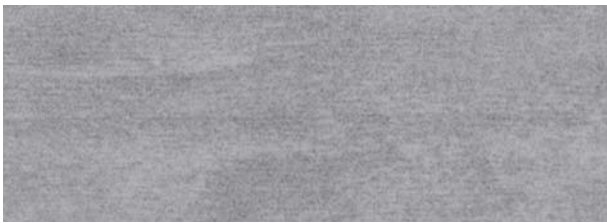
USABREB624



| 6X24 | *bullnose*

USABREB624BN

Nickel



| 12X24 |

USABRNI1224



| 6X24 |

USABRNI624



| 6X24 | *bullnose*

USABRNI624BN

Oyster



| 12X24 |

USABROY1224



| 6X24 |

USABROY624



| 6X24 | *bullnose*

USABROY624BN

Walnut



USABRWA1224



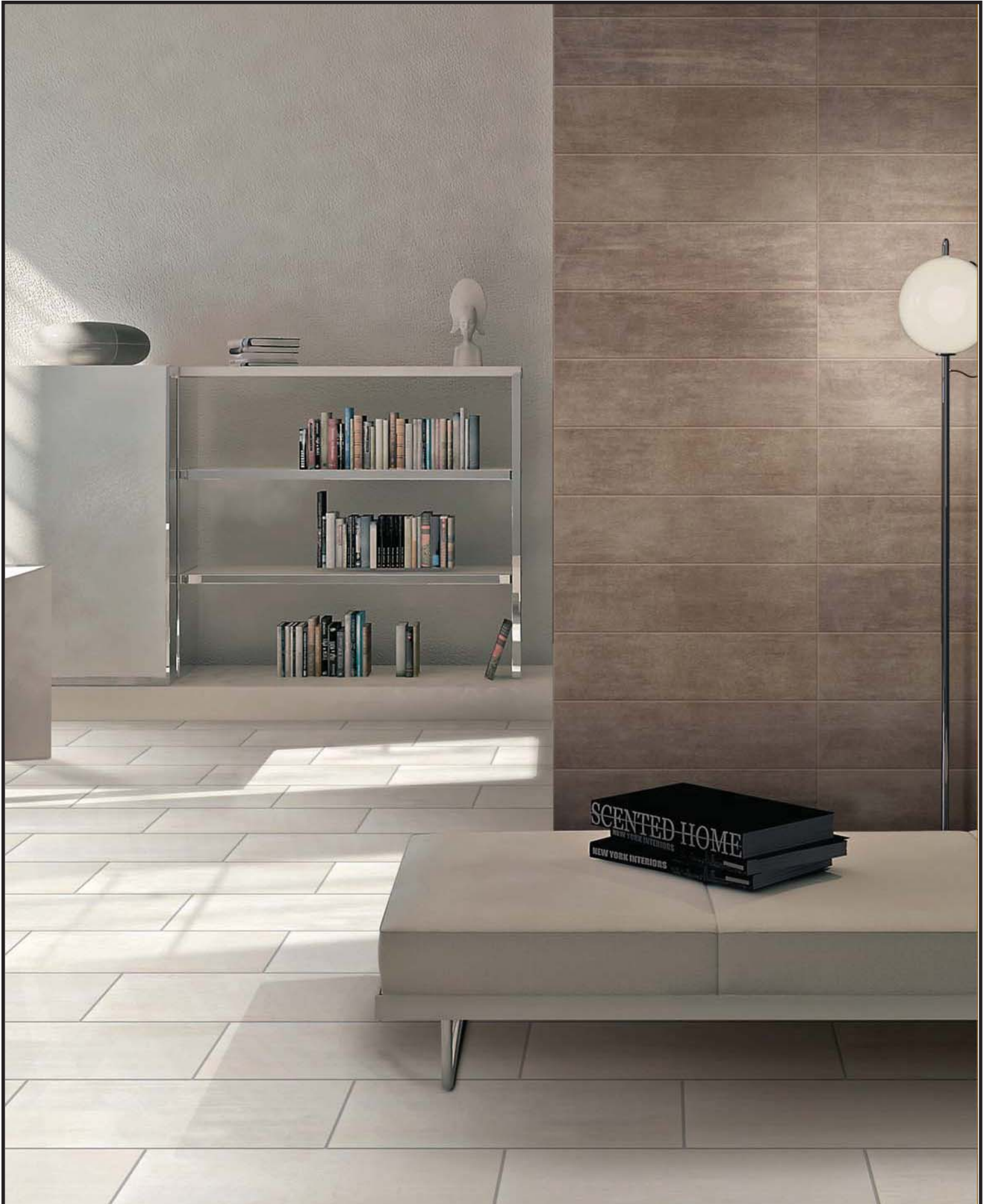
| 6X24 |

USABRWA624



| 6X24 | *bullnose*

USABRWA624BN



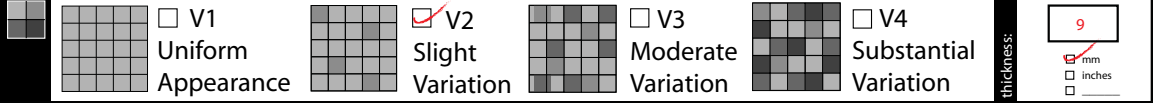
Suggested Applications



Installation Suggestions



Shade Variation



Slip Resistance

	WET		DRY	
	standard*	result	standard*	result
accessible routes	.6	.65	.6	.7
ramps	.8		.8	

Values
0 - 0.50
0.50 - 0.60
> 0.60

Tile Classification
Questionable
Conditionally Slip Resistant
Slip Resistant

*Industry Standard/ADA Requirements

DIN 51130	
<input type="checkbox"/>	R9* 3-10°
<input type="checkbox"/>	R10 10-19°
<input type="checkbox"/>	R11 19-27°
<input type="checkbox"/>	R12 27-35°
<input type="checkbox"/>	R13 >35°

DIN 51097		Critical angle
<input type="checkbox"/>	Class A Barefoot, but mainly dry aisles and walkways, dry changing areas	≥12°
<input type="checkbox"/>	Class B Shower rooms, pool surrounds, wet changing areas, disinfectant spray areas (plus all Class A areas)	≥18°
<input type="checkbox"/>	Class C Areas constantly under water, e.g. steps into pools, foot baths, included pool surrounds, jacuzzis (plus all Class A&B areas)	≥24°

ASTM C-1028
DIN 51097/51130

Scratch Resistance

Mineral	Mineral
1. Talc (Talc)	6. Microline (Glass, Glazed Tile)
2. Gypsum (Fingernail)	7. Quartz (Unglazed Porcelain)
3. Calcite (Penny)	8. Topaz (Granite)
4. Fluorite (Some Marbles)	9. Corundum (Ruby)
5. Apatite (Knife Blade)	10. Diamond (Diamond)

Industry standard ≤175mm²

MOH'S SCALE 8
UNI EN ISO 10545.6

Wear Resistance

- Class 1: Walls only
 - Class 2: Resid. floors w/minimal abrasive traffic.
 - Class 3: Resid. interiors normal use and foot traffic.
 - Class 4: Light-medium commercial applications.
 - Class 5: Commercial applications.
- PEI RATING
UNI EN ISO 10545.7

Stain Resistance

- Removed after 5 minutes (hot water running)
- Removed by manual cleaning (weak detergent)
- Removed by mechanical cleaning (strong detergent)
- Removed by immersion (24 hrs in suitable solvent)
- Stain not removed

ASTM C1378-04
UNI EN ISO 10545.14 5

Water Absorption

ASTM C-373
UNI EN ISO 10545.3

<input checked="" type="checkbox"/>	Absorbs 0-5% Impervious Interior/exterior Frost Resistant
<input type="checkbox"/>	Absorbs 5-3% Vitreous Interior/exterior Frost Resistant
<input type="checkbox"/>	Absorbs 3-7% Semi-Vitreous Indoor use only
<input type="checkbox"/>	Absorbs 7%+ Non-Vitreous Indoor use only

Breaking Strength

Industry standard should be greater than 250 lbs or 50 N/MM²

ASTM C648
UNI EN ISO 10545.4

Facial Dimension

ASTM c499-09
UNI EN ISO 10545.02

	Standard	Tolerance	Result
flatness	± 5mm	± .5%	
thickness	± .04"	± .5%	<.018"
straightness	± 4.5mm	± .5%	
squareness	± 5.4mm	± .6%	
sides L/W	± 1.1mm ± 4.5mm	± .5%	

Chemical Resistance

ASTM C650
UNI EN ISO 10545.13

Allowances for:

	result
acid	NO EFFECT
bases	NO EFFECT
chemicals	

Lead Information

REQUIREMENTS FOR COMMERCIAL INTERIORS/NEW CONSTRUCTION

	Allowances for:
Sustainable Sites Site selection SS CREDIT 1 Heat Island Effect-non roof Material with a solar reflectant index of at least 29.	1 Point <input checked="" type="checkbox"/>
Energy & Atmosphere EA CREDIT 4 Green Power: Products that optimize energy performance for floors and walls using thermal conductivity. BTU-FT	1 Point <input checked="" type="checkbox"/>
Indoor Environmental Quality Low-Emitting Materials-Flooring Systems IEQ CREDIT 3.1-7 Green Cleaning: Reducing occupants exposure to hazardous cleaning chemicals.	1 Point <input checked="" type="checkbox"/>
IEQ CREDIT 4.1 Low Emitting Adhesives: Products less than 65 G/L VOC	<input checked="" type="checkbox"/>
IEQ CREDIT 4.3 Low Emitting Materials: Flooring systems.	<input checked="" type="checkbox"/>

	Allowances for:
Materials & Resources M&R CREDIT 2 Construction Waste Management: Recycling salvaged construction waste in to new reusable materials.	1 Point 50% <input type="checkbox"/>
M&R CREDIT 4.1-4.2 Recycled Content: The sum of post consumer plus 1/2 of the pre consumer reps at least 10-20% of total value of materials.	2 Points 70% <input type="checkbox"/>
M&R CREDIT 5 Regional Materials: Materials manufactured within 500 miles of the project site.	10% <input type="checkbox"/> 20% <input checked="" type="checkbox"/>
Innovation in Design ID CREDIT 1 Innovation in Design Measurable exemplary environmental performance.	1-5 Points <input type="checkbox"/>

Type: **Color body porcelain**
Product Line: **Brushstroke**



For Information and samples
1-800-3-CANCOS
customerservice@cancos.com

Due to printing and variations, colors shown could vary from actual sample.