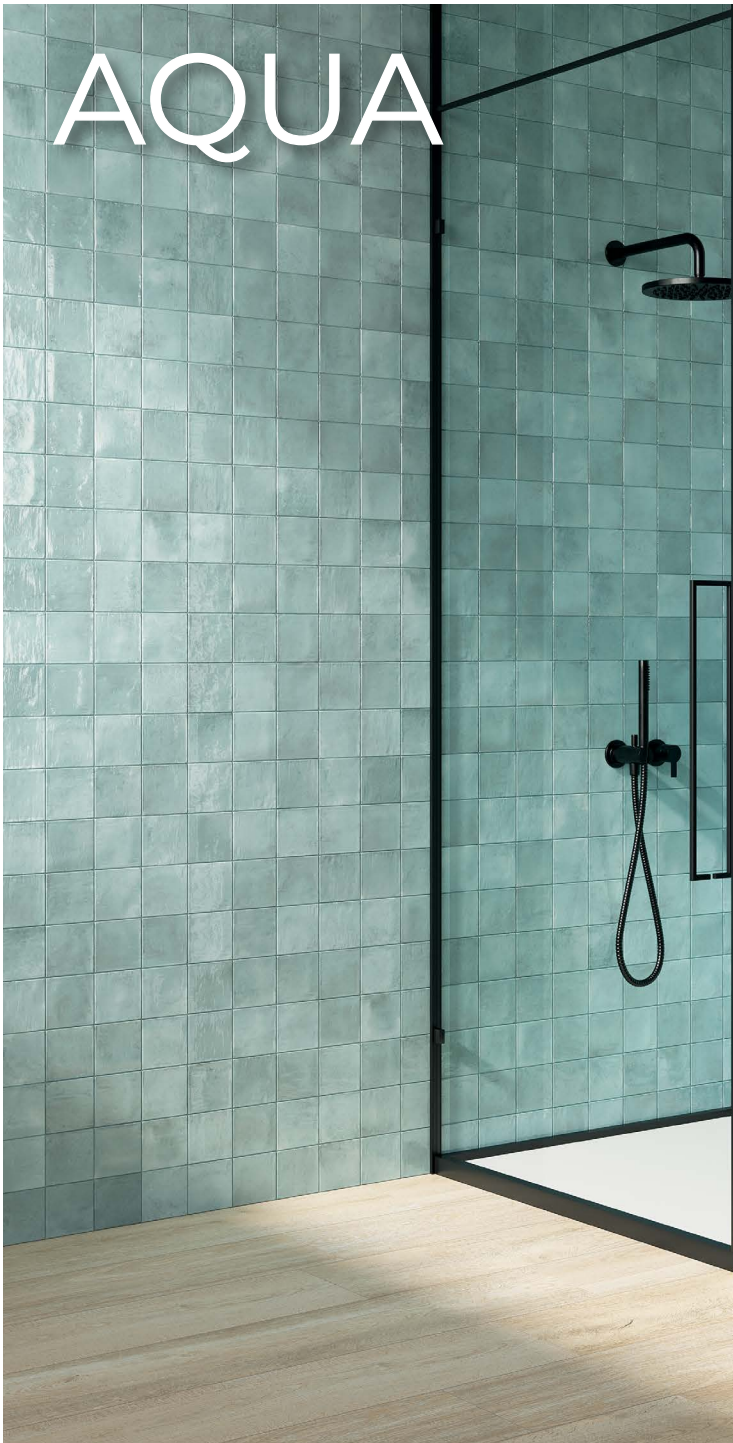


COASTAL *porcelain stoneware*



CANCOS
TILE & STONE

AQUA



Coastal



* 4x4 BULLNOSE AVAILABLE - DOMCSAQB44 *

DOMCSAQ44



> 4x4 <

DOMCSAQ44D



6 PATTERNS

> 4x4 decos <

Coastal

BOUQUET



DOMCSBO44D



6 PATTERNS

> 4x4 decos <

DOMCSBO44



> 4x4 <

* 4x4 BULLNOSE AVAILABLE - DOMCSBOBN44*

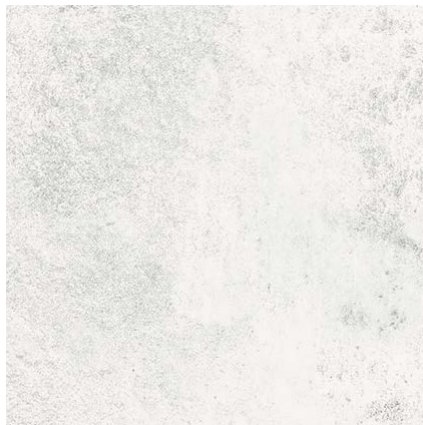
COTTON

Coastal



4x4 BULLNOSE AVAILABLE - DOMSCOBN44

DOMCSO44



> 4x4 <

Coastal

EMERALD



DOMCSEM44D



6 PATTERNS

> 4x4 decos <

DOMCSEM44



> 4x4 <

* 4x4 BULLNOSE AVAILABLE - DOMCSEM44*

LINEN

Coastal



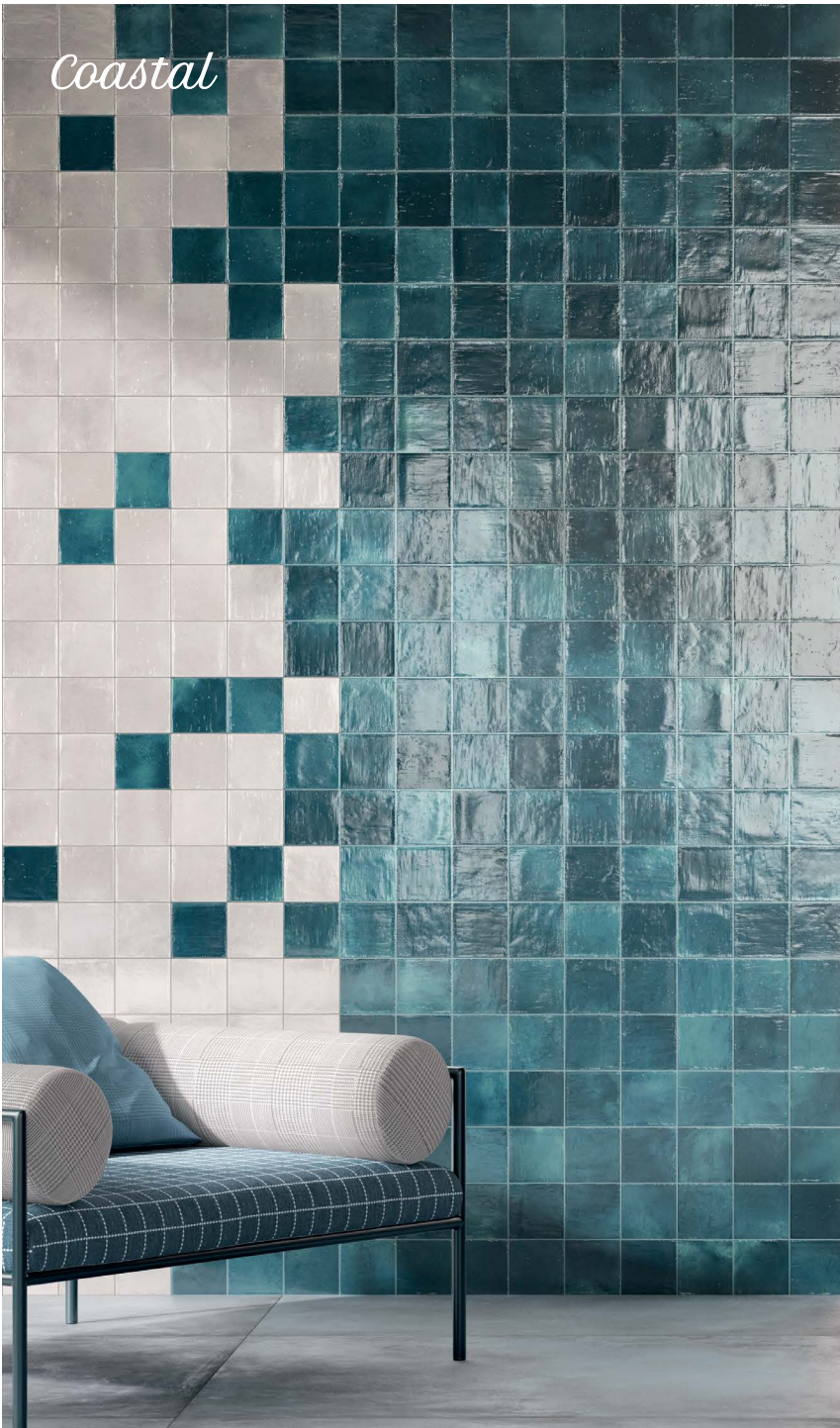
DOMCSLI44



> 4x4 <

4x4 BULLNOSE AVAILABLE - DOMCSLIBN44

Coastal



OCEAN



DOMCSOC44D



6 PATTERNS

> 4x4 decos <

DOMCSOC44



> 4x4 <

* 4x4 BULLNOSE AVAILABLE - DOMCSOCBN44*

SILK

Coastal



DOMCSSI44



> 4x4 <

4x4 BULLNOSE AVAILABLE - DOMCSSI44

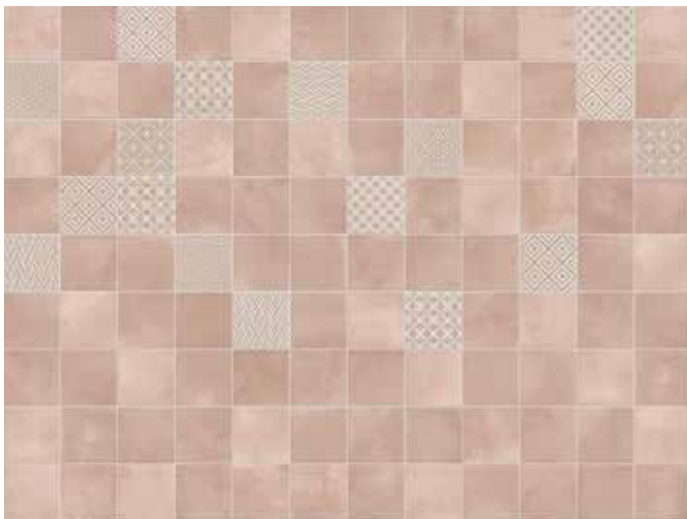
Layout Schemes



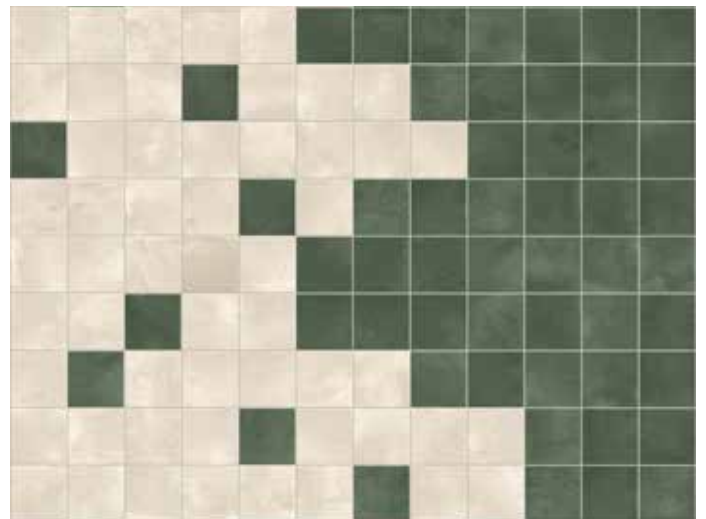
OCEAN, AQUA



EMERALD, SILK



BOUQUET, PATTERN BOUQUET



EMERALD, LINEN

AQUA COTTON OCEAN





Suggested Applications

Floor Wall Residential Light Commercial Heavy Commercial Exterior Pools

*Wear can vary greatly. please consult with a professional.

Installation Suggestions

Plank Installation* Modular Setting Joint Size 2mm

*Install the offset the width of the plank. For professional installation, the use of leveling spacers for all plank and rectangular (ie. 12x24) format tiles is recommended.

EDGE: Straight/Pressed Rustic Rectified

FINISH: Matte Polished Structured Honed Semi-Polished Glossy

Porcelain Type

through-body color-bodied glazed unglazed double-loaded other

Shade Variation

V1 Uniform Appearance V2 Slight Variation V3 Moderate Variation V4 Substantial Variation

THICKNESS: 10mm # OF FACES: 100

Slip Resistance

DCOF	Values	Applications
0.42	0.42	Recommended Standard DCOF value for wet/dry commercial flooring
	0.65	Recommended Standard DCOF value for ADA ramps

DIN 51130 *R9: Industry Standard/ADA Requirements **R11: Recommended For Exteriors

R9* (3-10°) R10 (10-19°) R11** (19-27°) R12 (27-35°) R13 (>35°)

DIN 51097

Class	Typical Applications	Critical Angle
<input type="checkbox"/> A	Barefoot, but mainly dry aisles and walkways, dry changing areas	≥12°
<input type="checkbox"/> B	Shower rooms, pool surrounds, wet changing areas, disinfectant spray areas (plus all Class A areas)	≥18°
<input type="checkbox"/> C	Areas constantly under water, e.g. steps into pools, foot baths, inclined pool surrounds, jacuzzis (plus all Class A&B areas)	≥24°

ASTM C-1028
 ANSI A137.1
 DIN 51097/51130

Scratch Resistance

MOH'S SCALE
 UNI EN ISO 10545.6

5

MINERAL

1. Talc (Talc)	6. Microline (Glass, Glazed Tile)
2. Gypsum (Fingernail)	7. Quartz (Unglazed Porcelain)
3. Calcite (Penny)	8. Topaz (Granite)
4. Flourite (Some Marbles)	9. Corundum (Ruby)
5. Apatite (Knife Blade)	10. Diamond (Diamond)

Industry standard ≤175mm²

Wear Resistance

PEI RATING
 UNI EN ISO 10545.7

- Class 1: Walls only
 - Class 2: Residential floors w/minimal abrasive traffic
 - Class 3: Residential interiors/light commercial traffic
 - Class 4: Medium commercial applications
 - Class 5: All commercial applications/heavy traffic
- *Wear can vary greatly. please consult with a professional.

Stain Resistance

ASTM C1378-04
 UNI EN ISO 10545.14

5

- 5: Removed after 5 minutes (hot water running)
- 4: Removed by manual cleaning (weak detergent)
- 3: Removed by mechanical cleaning (strong detergent)
- 2: Removed by immersion (24 hrs in suitable solvent)
- 1: Stain not removed

Water Absorption

ASTM C-373
 UNI EN ISO 10545.3

<input checked="" type="checkbox"/> Absorbs 0-.5%	<input type="checkbox"/> Absorbs .5-3%	<input type="checkbox"/> Absorbs 3-7%	<input type="checkbox"/> Absorbs 7% +
<input checked="" type="checkbox"/> Impervious Interior/Exterior Frost Resistant	<input type="checkbox"/> Vitreous Interior/Exterior Frost Resistant	<input type="checkbox"/> Semi-Vitreous Indoor Use Only	<input type="checkbox"/> Non-Vitreous Indoor Use Only

Breaking Strength

ASTM C648
 UNI EN ISO 10545.4

PASS

Industry standard should be greater than 250 lbs or 50 N/MM²

Facial Dimension

ASTM c499-09
 UNI EN ISO 10545.02

	Standard	Tolerance	Result
flatness	± 5mm	± .5%	PASS
thickness	± 6mm	± .5%	PASS
straightness	± 4.5mm	± .5%	PASS
squareness	± 5.4mm	± .6%	PASS
sides L/W	± 1.1mm / ± 4.5mm	± .5%	PASS

Chemical Resistance

ASTM C650
 UNI EN ISO 10545.13



Allowances for:

	result
Acid	B
Bases	B
Chemicals	A

Leed Information



REQUIREMENTS FOR COMMERCIAL INTERIORS/NEW CONSTRUCTION

Sustainable Sites	1 Point	Materials & Resources	1 Point	2 Points
Site selection		M&R CREDIT 2		
SS CREDIT 1		Construction Waste Management: Recycling salvaged construction waste in to new reusable materials.	50% <input type="checkbox"/>	70% <input type="checkbox"/>
Heat Island Effect-non roof	<input type="checkbox"/>	M&R CREDIT 4.1-4.2		
Material with a solar reflectant index of at least 29.		Recycled Content: The sum of post consumer plus 1/2 of the pre consumer reps at least 10-20% of total value of materials.	10% <input type="checkbox"/>	20% <input type="checkbox"/>
Energy & Atmosphere	1 Point	M&R CREDIT 5		
EA CREDIT 4		Regional Materials: Materials manufactured within 500 miles of the project site.	10% <input type="checkbox"/>	20% <input type="checkbox"/>
Green Power: Products that optimize energy performance for floors and walls using thermal conductivity. BTU-FT	<input type="checkbox"/>	Innovation in Design		1-5 Points
Indoor Environmental Quality	1 Point	ID CREDIT 1		
Low-Emitting Materials-Flooring Systems		Innovation in Design		
IEQ CREDIT 3.1-7		Measurable exemplary environmental performance.	<input type="checkbox"/>	
Green Cleaning: Reducing occupants exposure to hazardous cleaning chemicals.	<input type="checkbox"/>			
IEQ CREDIT 4.1				
Low Emitting Adhesives: Products less than 65 G/L VOC	<input type="checkbox"/>			
IEQ CREDIT 4.3				
Low Emitting Materials: Flooring systems.	<input type="checkbox"/>			

Type: 4"x4" Porcelain Tile

Product Line: COASTAL

The marketing name for this product is property of Canoco Tile & Stone. This same product may be marketed under different names.