

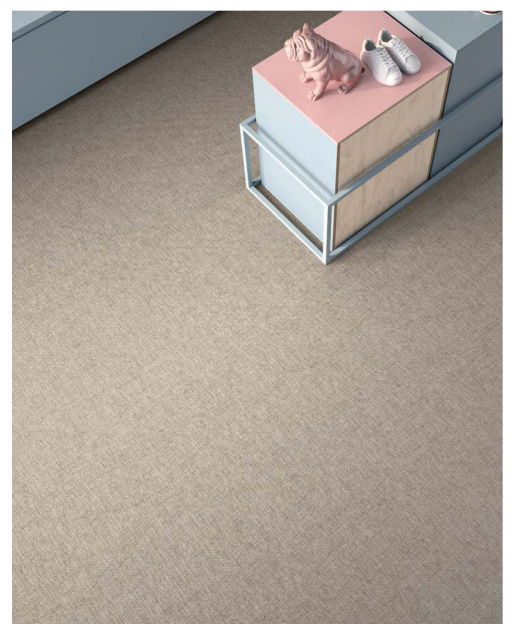
Textile



*Inspired By Nature,
Made Possible By...*

CANCOS
TILE & STONE

PORCELAIN STONEWARE



ELETEEC1224



| 12x24 |

ELETEEC24



| 24x24 |

ELETEECMOS22



| 2x2 mosaic: dark mix |

ELETEECMOSHEX



| hexagon mosaic: dark mix |

ELETEEC24D



| 24x24: dark deco |

ELETEECBN324



| 3x24 bullnose |

PORCELAIN STONEWARE

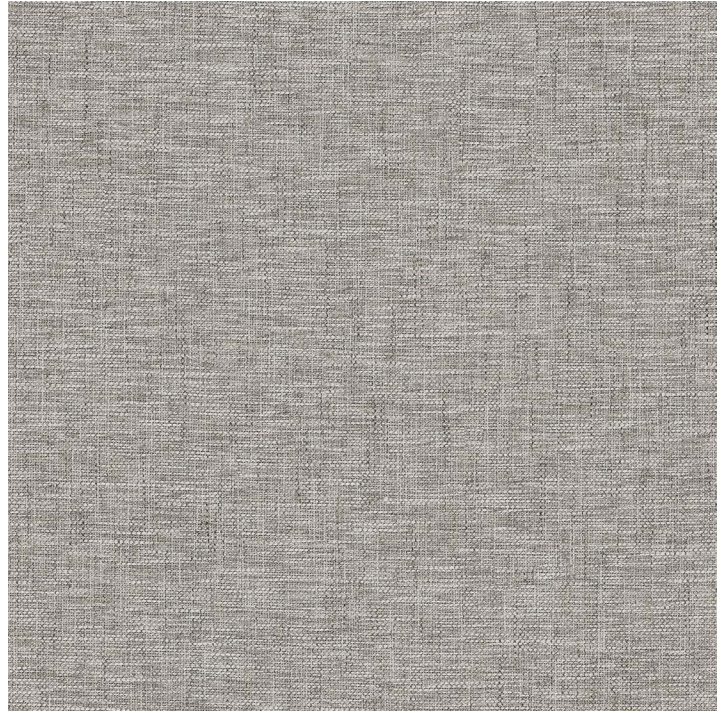


ELETEGR1224



| 12x24 |

ELETEGR24



| 24x24 |

ELETEGRMOS22



| 2x2 mosaic: dark mix |

ELETEGR24D



| 24x24: dark deco |

ELETEGRMOSHEX



| hexagon mosaic: dark mix |

ELETEGRBN324



| 3x24 bullnose |

PORCELAIN STONEWARE



ELETEPE1224



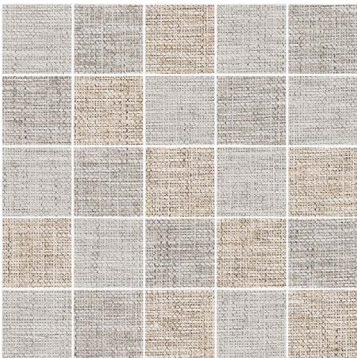
| 12x24 |

ELETEPE24



| 24x24 |

ELETEPEMOS22



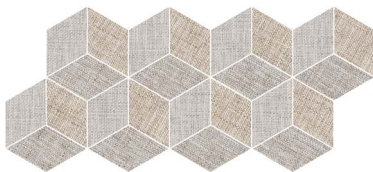
| 2x2 mosaic: *light mix* |

ELETEPE24D



| 24x24: *light deco* |

ELETEPEMOSHEX



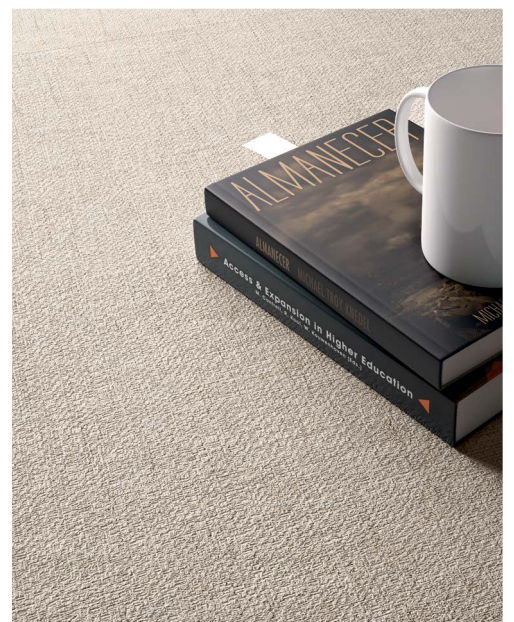
| hexagon mosaic: *light mix* |

ELETEPEBN324



| 3x24 bullnose |

PORCELAIN STONEWARE



ELETESA1224



| 12x24 |

ELETESA24



| 24x24 |

ELETESAMOS22



| 2x2 mosaic: dark mix |

ELETESAMOSHEX



| hexagon mosaic: dark mix |

ELETESA24D



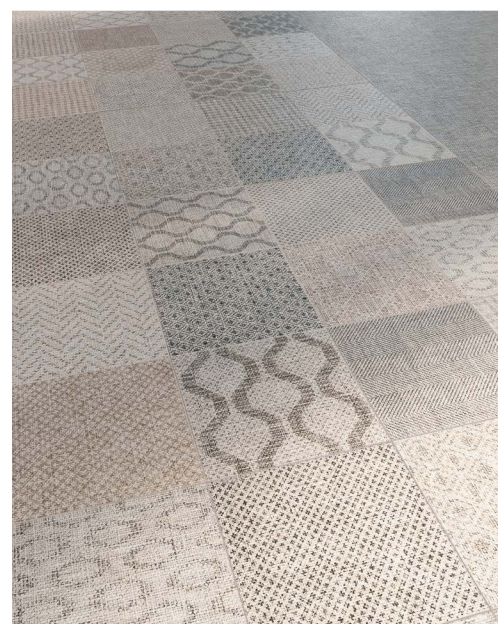
| 24x24 dark deco |

ELETESABN324



| 3x24 bullnose |

PORCELAIN STONEWARE

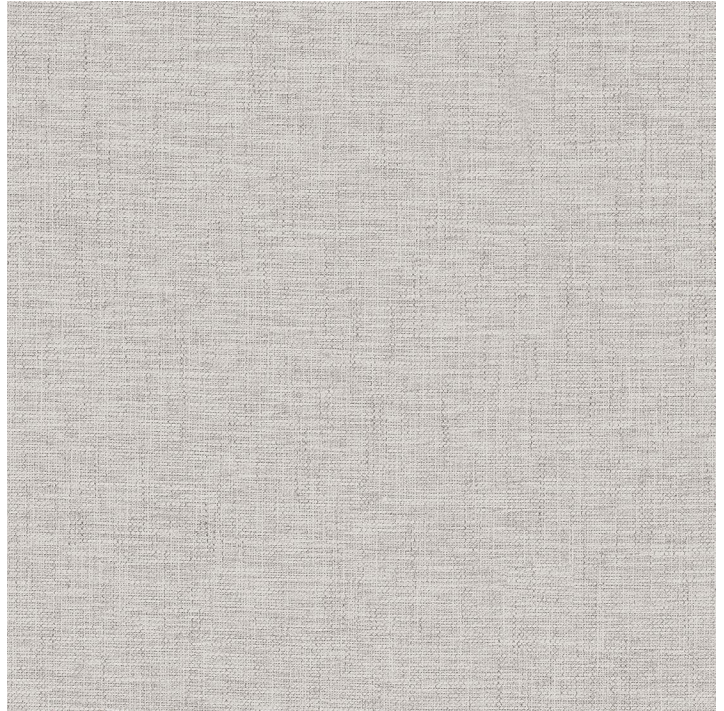


ELETEWH1224



| 12x24 |

ELETEWH24



| 24x24 |

ELETEWHMOS22



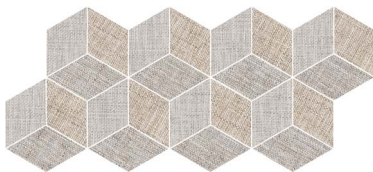
| 2x2 mosaic: *light mix* |

ELETEWH24D



| 24x24: *light deco* |

ELETEWHMOSHEX



| hexagon mosaic: *light mix* |

ELETEWHBN324



| 3x24 bullnose |



Patchwork Decos



Ecru: ELETEEC88D, Grey: ELETEGR88D, Pearl: ELETEPE88D,
Sand: ELETESA88D, White: ELETEWH88D

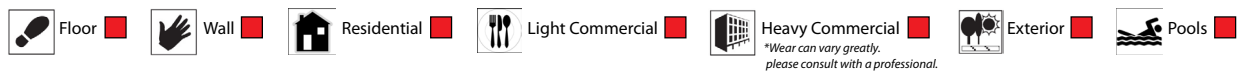
| (48) 8x8 Assorted Decos |
randomly mixed per box





LIGHT DECO

Suggested Applications



Installation Suggestions

Plank Installation* Modular Setting Joint Size

*Install the offset the width of the plank. For professional installation, the use of leveling spacers for all plank and rectangular (ie. 12x24) format tiles is recommended.

EDGE: Straight/Pressed Rustic Rectified

FINISH: Matte Polished Structured
 Honed Semi-Polished Other

Porcelain Type

through-body color-bodied glazed unglazed double-loaded other _____

Shade Variation

V1 Uniform Appearance V2 Slight Variation V3 Moderate Variation V4 Substantial Variation

THICKNESS: 10mm # OF FACES:

Slip Resistance

DCOF	Values	Applications
<input checked="" type="checkbox"/> >.42	0.42	Recommended Standard DCOF value for wet/dry commercial flooring
	0.65	Recommended Standard DCOF value for ADA Ramps

DIN 51130 *R9: Industry Standard/ADA Requirements **R11: Recommended For Exteriors

R9* (3-10°) R10 (10-19°) R11** (19-27°)
 R12 (27-35°) R13 (>35°)

DIN 51097

Class	Typical Applications	Critical Angle
<input type="checkbox"/> A	Barefoot, but mainly dry aisles and walkways, dry changing areas	≥12°
<input type="checkbox"/> B	Shower rooms, pool surrounds, wet changing areas, disinfectant spray areas (plus all Class A areas)	≥18°
<input type="checkbox"/> C	Areas constantly under water, e.g. steps into pools, foot baths, inclined pool surrounds, jacuzzis (plus all Class A&B areas)	≥24°

ASTM C-1028
ANSI A137.1
DIN 51097/51130

Scratch Resistance

MOH'S SCALE
UNI EN ISO
10545.6

MINERAL

1. Talc (Talc)	6. Microline (Glass, Glazed Tile)
2. Gypsum (Fingernail)	7. Quartz (Unglazed Porcelain)
3. Calcite (Penny)	8. Topaz (Granite)
4. Flourite (Some Marbles)	9. Corundum (Ruby)
5. Apatite (Knife Blade)	10. Diamond (Diamond)

Industry standard ≤175mm²

Wear Resistance

PEI RATING
UNI EN ISO
10545.7

- Class 1: Walls only
 - Class 2: Residential floors w/minimal abrasive traffic
 - Class 3: Residential interiors/light commercial traffic
 - Class 4: Medium commercial applications
 - Class 5: All commercial applications/heavy traffic
- *Wear can vary greatly. please consult with a professional.

Stain Resistance

ASTM C1378-04
UNI EN ISO
10545.14

- 5: Removed after 5 minutes (hot water running)
- 4: Removed by manual cleaning (weak detergent)
- 3: Removed by mechanical cleaning (strong detergent)
- 2: Removed by immersion (24 hrs in suitable solvent)
- 1: Stain not removed

3

Water Absorption

ASTM C-373
UNI EN ISO
10545.3

Absorbs 0-.5% Absorbs .5-3% Absorbs 3-7% Absorbs 7% +

Impervious Interior/Exterior Frost Resistant
 Vitreous Interior/Exterior Frost Resistant
 Semi-Vitreous Indoor Use Only
 Non-Vitreous Indoor Use Only

Breaking Strength

ASTM C648
UNI EN ISO
10545.4

Industry standard should be greater than 250 lbs or 50 N/MM²

PASS

Facial Dimension

ASTM c499-09
UNI EN ISO
10545.02

	Standard	Tolerance	Result
flatness	±5mm	±.5%	<input type="checkbox"/>
thickness	±6mm	±.5%	<input type="checkbox"/>
straightness	±4.5mm	±.5%	<input type="checkbox"/>
squareness	±5.4mm	±.6%	<input type="checkbox"/>
sides L/W	±1.1mm ±4.5mm	±.5%	<input type="checkbox"/>

Chemical Resistance

ASTM C650
UNI EN ISO
10545.13

Allowances for: result

Acid

Bases

Chemicals

Leed Information



REQUIREMENTS FOR COMMERCIAL INTERIORS/NEW CONSTRUCTION

Sustainable Sites	1 Point	Materials & Resources	1 Point	2 Points
Site selection		M&R CREDIT 2		
SS CREDIT 1		Construction Waste Management: Recycling salvaged construction waste in to new reusable materials.	50% <input type="checkbox"/>	70% <input type="checkbox"/>
Heat Island Effect-non roof	<input type="checkbox"/>	M&R CREDIT 4.1-4.2		
Material with a solar reflectant index of at least 29.		Recycled Content: The sum of post consumer plus 1/2 of the pre consumer reps at least 10-20% of total value of materials.	10% <input type="checkbox"/>	20% <input type="checkbox"/>
Energy & Atmosphere	1 Point	M&R CREDIT 5		
EA CREDIT 4		Regional Materials: Materials manufactured within 500 miles of the project site.	10% <input type="checkbox"/>	20% <input type="checkbox"/>
Green Power: Products that optimize energy performance for floors and walls using thermal conductivity. BTU-FT	<input type="checkbox"/>	Innovation in Design		1-5 Points
Indoor Environmental Quality	1 Point	ID CREDIT 1		
Low-Emitting Materials-Flooring Systems		Innovation in Design		
IEQ CREDIT 3.1-7		Measurable exemplary environmental performance.		<input type="checkbox"/>
Green Cleaning: Reducing occupants exposure to hazardous cleaning chemicals.	<input type="checkbox"/>			
IEQ CREDIT 4.1				
Low Emitting Adhesives: Products less than 65 G/L VOC	<input type="checkbox"/>			
IEQ CREDIT 4.3				
Low Emitting Materials: Flooring systems.	<input type="checkbox"/>			

Type: **Porcelain Stoneware**

Product Line: **Textile**

The marketing name for this product is property of Concos Tile & Stone. This same product may be marketed under different names.