

Venezia

porcelain stoneware



venezia
CALACATTA





CALACATTA

48"x48"

ELEVECG48L

polished finish
9mm thickness
10 faces



venezia
CARRARA





CARRARA

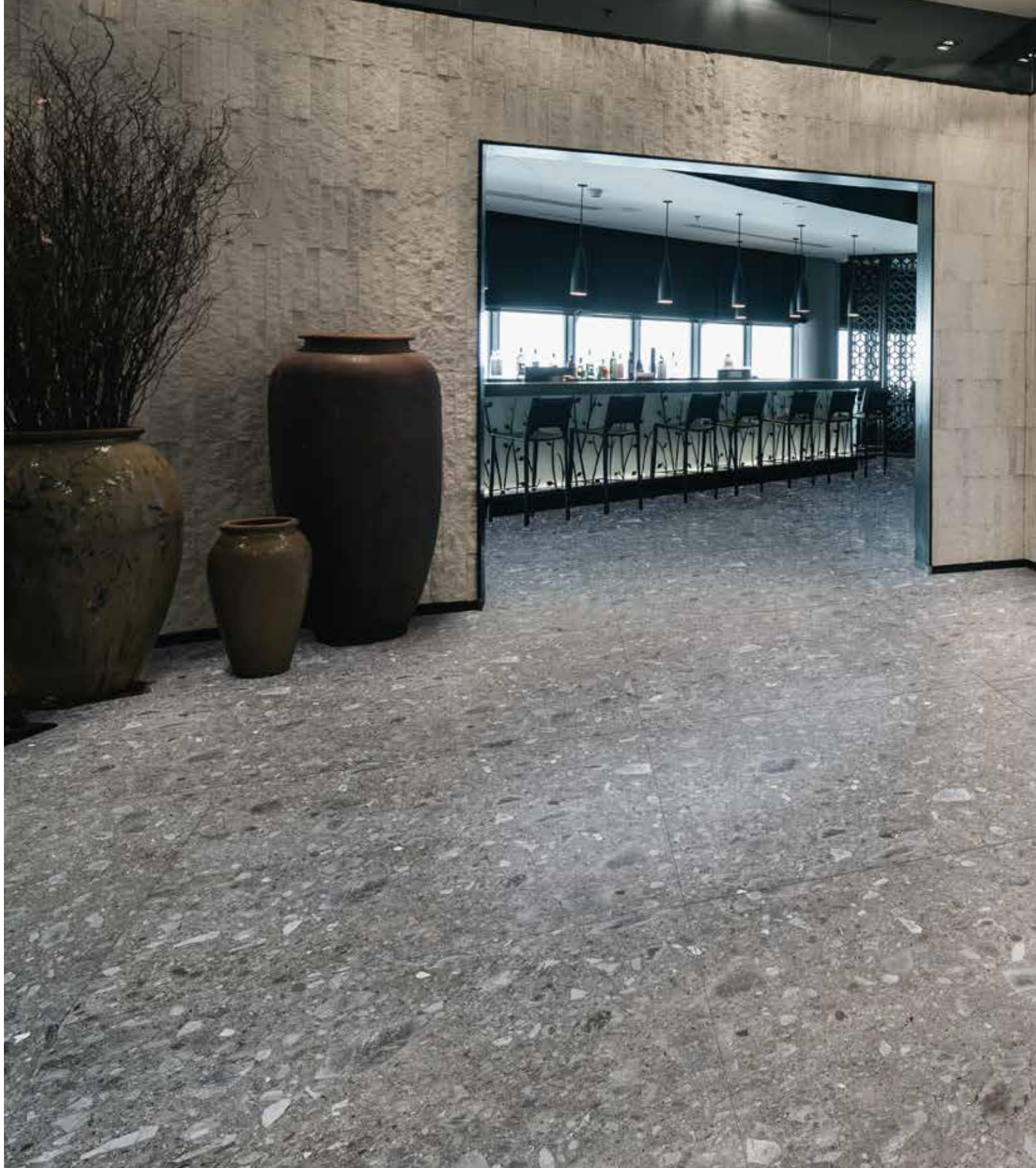
48"x48"

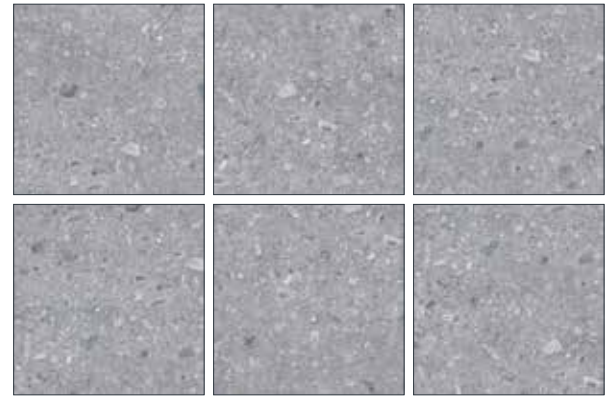
ELEVECR48L

polished finish
9mm thickness
12 faces



venezia
CEPPO GREY



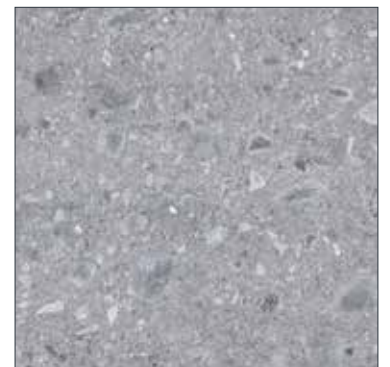


CEPPO GREY

48"x48"

ELEVECE48

matte finish
9mm thickness
6 faces



venezia
DOLOMITE





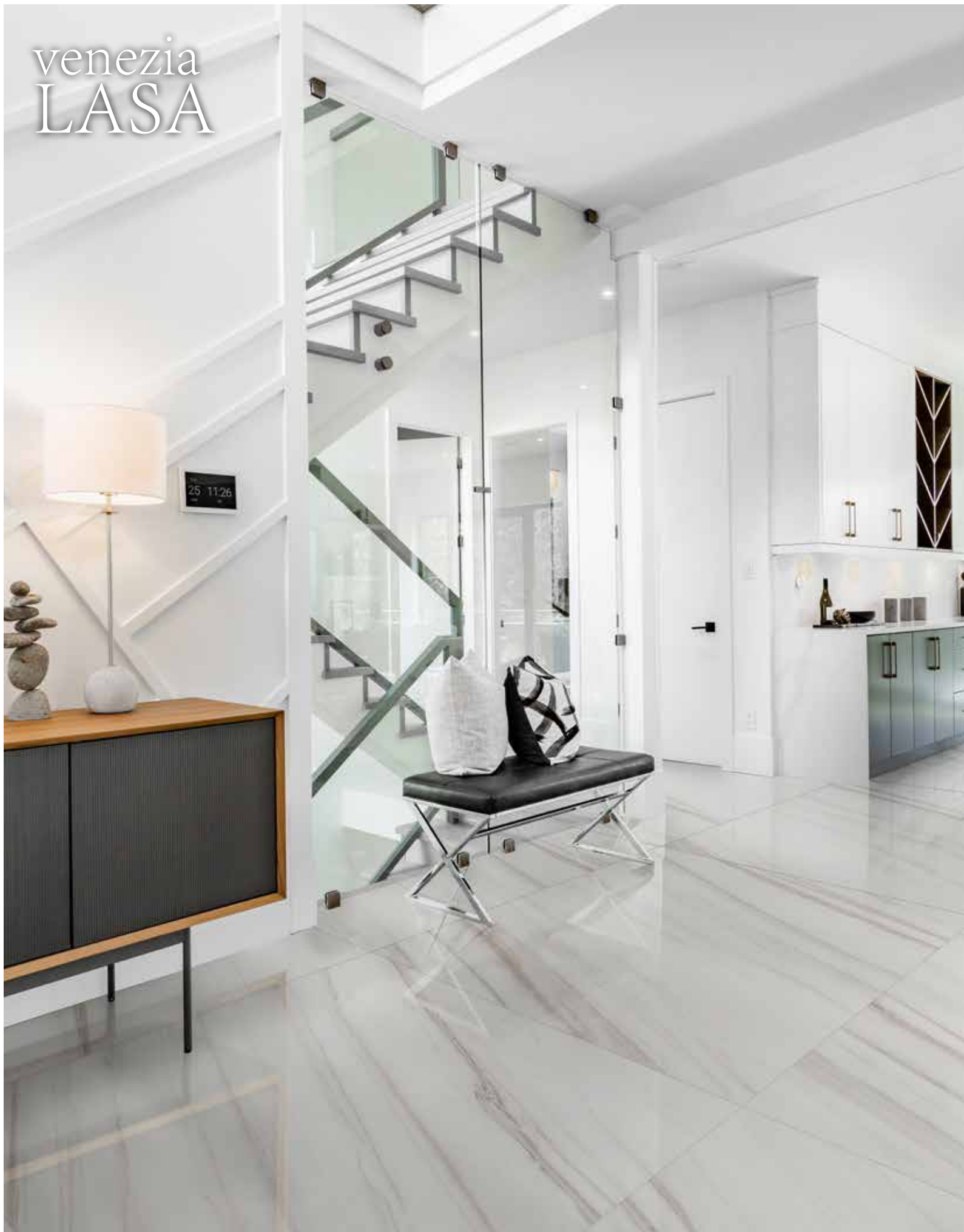
DOLOMITE 48"x48"

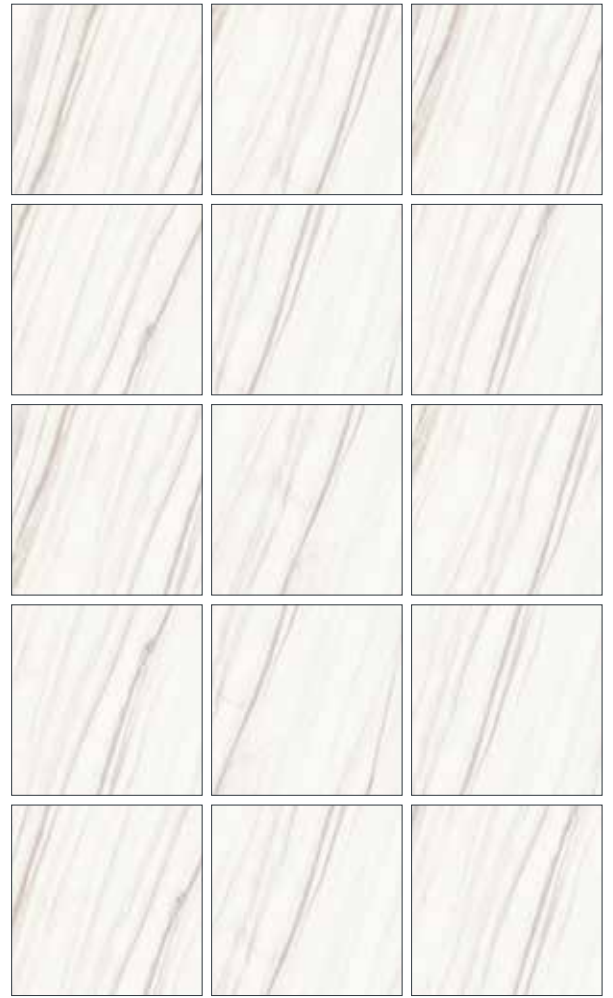
ELEVEDO48L

polished finish
9mm thickness
15 faces



venezia
LASA





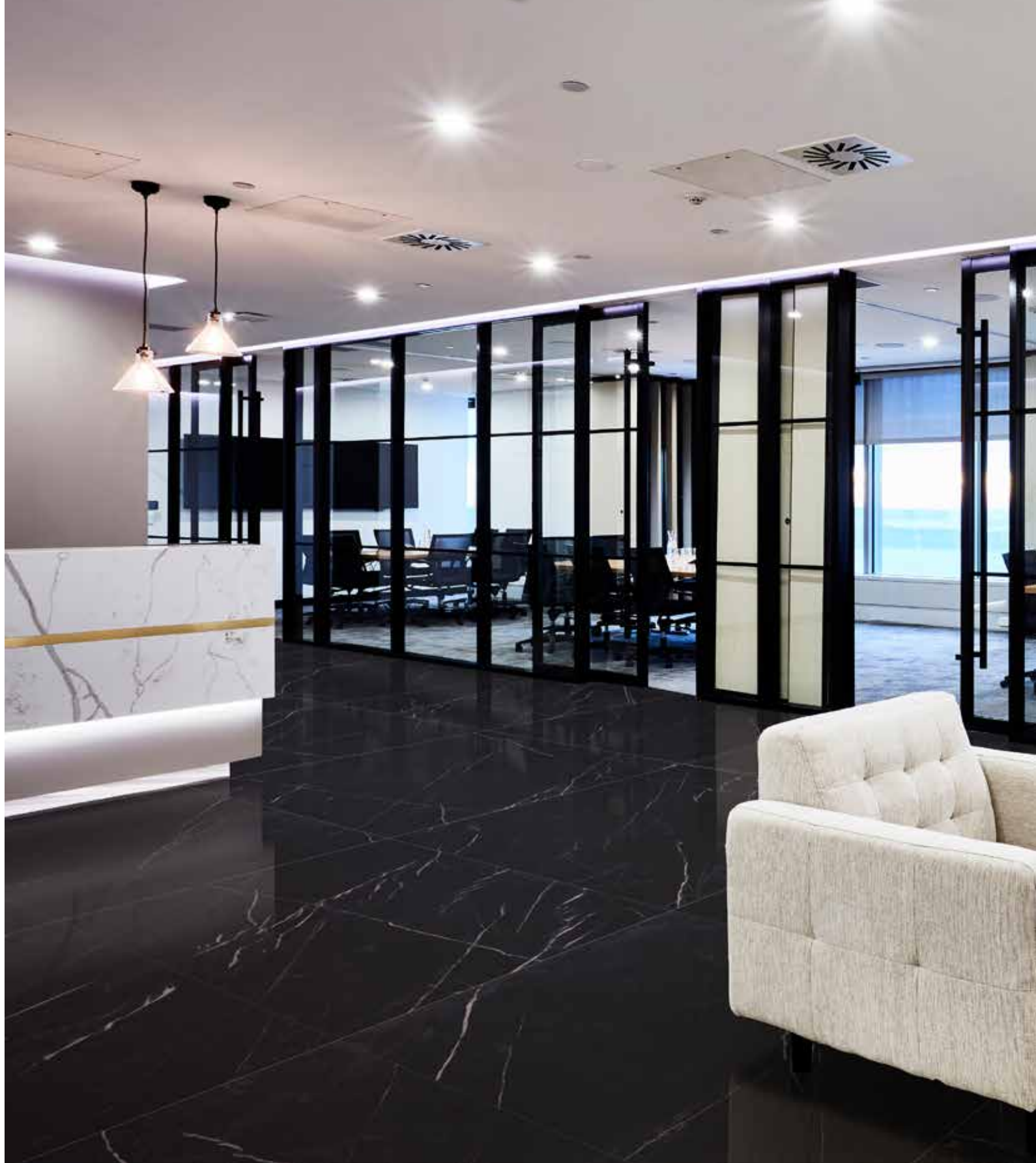
LASA
48"x48"

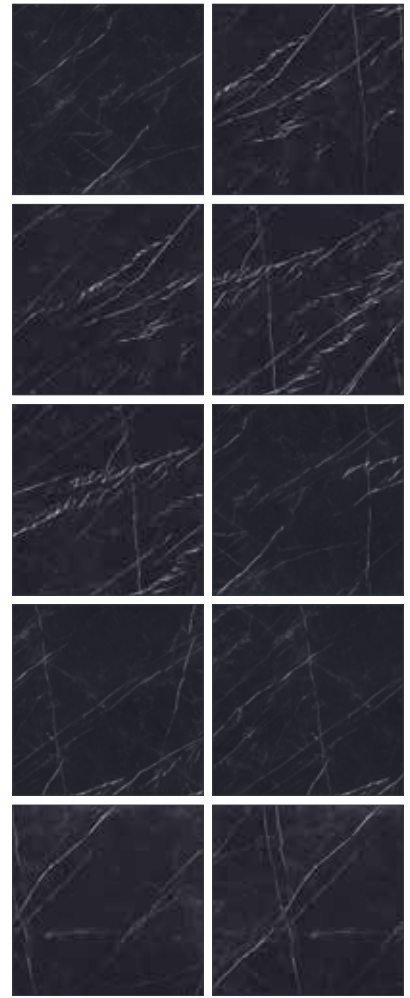
ELEVELA48L

polished finish
9mm thickness
15 faces



venezia
NERO MARQUINA

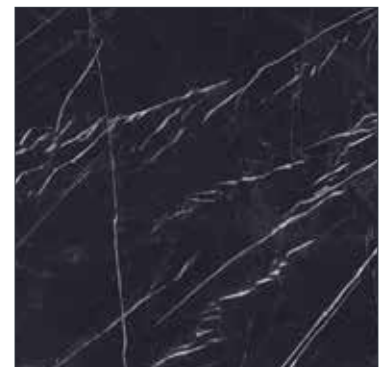




NERO MARQUINA 48"x48"

ELEVENM48L

polished finish
9mm thickness
10 faces



venezia
SAHARA WHITE



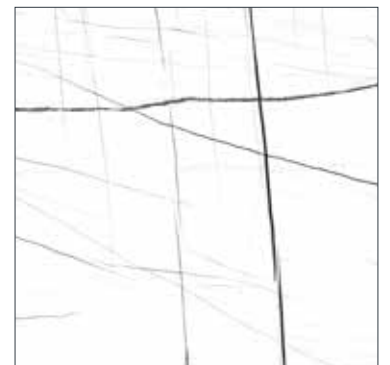


SAHARA WHITE

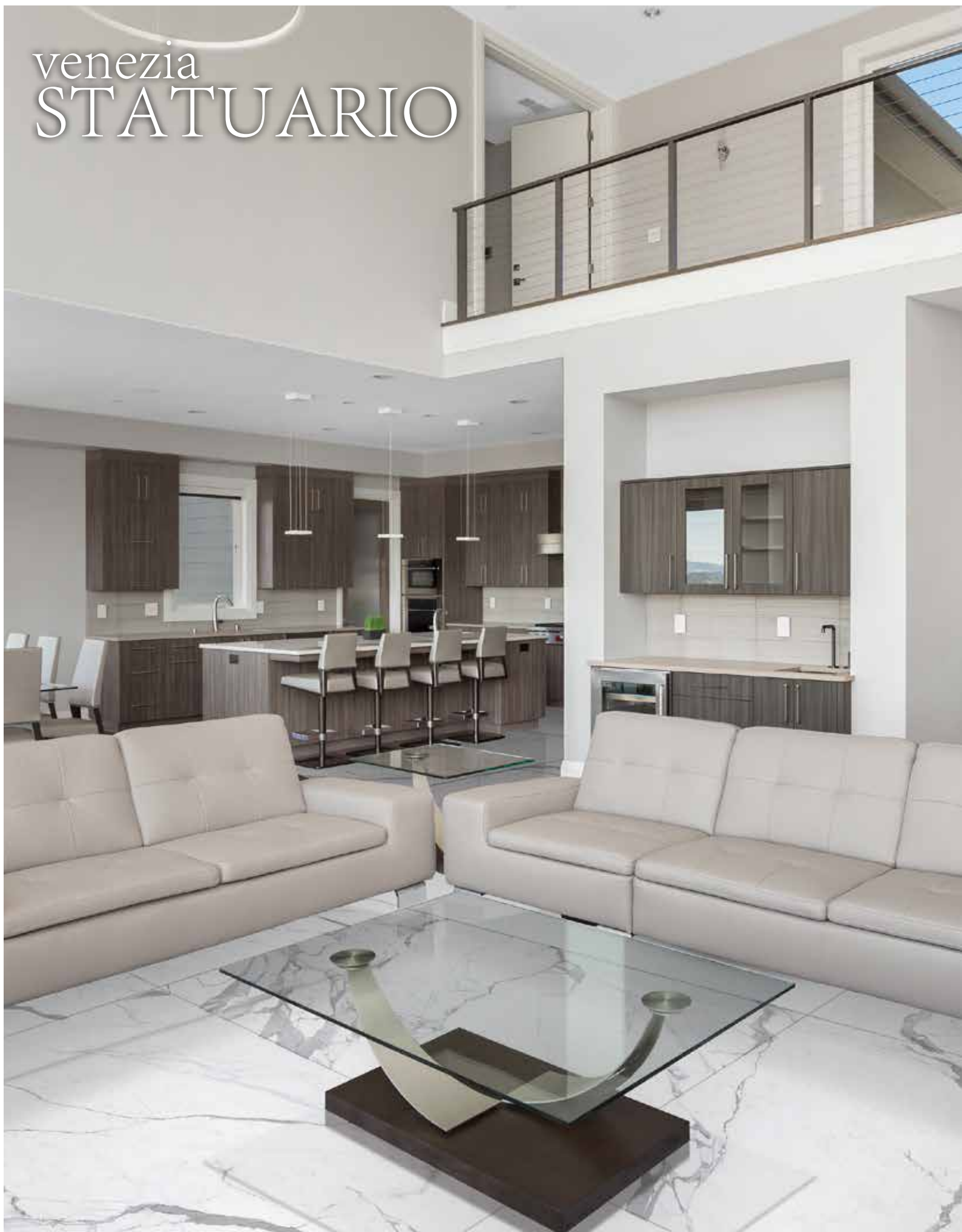
48"x48"

ELEVESW48L

polished finish
9mm thickness
10 faces



venezia
STATUARIO





STATUARIO 48"x48"

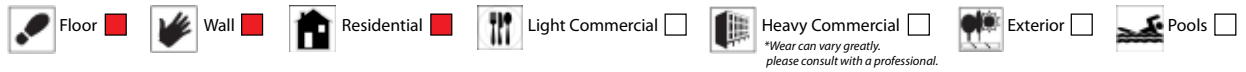
ELEVEST48L



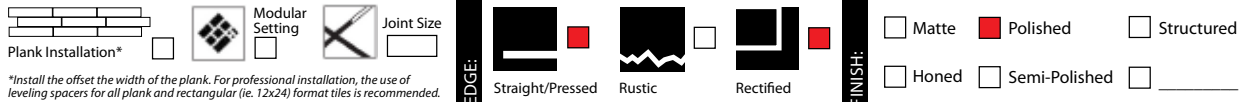
polished finish
9mm thickness
8 faces



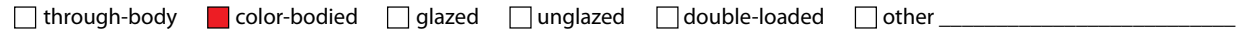
Suggested Applications



Installation Suggestions



Porcelain Type



Shade Variation



Slip Resistance

DCOF	Values	Applications
<input type="checkbox"/>	0.42	Recommended Standard DCOF value for wet/dry commercial flooring
	0.65	Recommended Standard DCOF value for ADA ramps

ASTM C-1028
ANSI A137.1
DIN 51097/51130

DIN 51130 *R9: Industry Standard/ADA Requirements **R11: Recommended For Exteriors
 R9* (3-10°) R10 (10-19°) R11** (19-27°)
 R12 (27-35°) R13 (>35°)

DIN 51097		Critical Angle
Class	Typical Applications	
<input checked="" type="checkbox"/> A	Barefoot, but mainly dry aisles and walkways, dry changing areas	≥12°
<input type="checkbox"/> B	Shower rooms, pool surrounds, wet changing areas, disinfectant spray areas (plus all Class A areas)	≥18°
<input type="checkbox"/> C	Areas constantly under water, e.g. steps into pools, foot baths, included pool surrounds, jacuzzis (plus all Class A&B areas)	≥24°

Scratch Resistance

MOH'S SCALE
UNI EN ISO
10545.6

MINERAL	
1. Talc (Talc)	6. Microline (Glass, Glazed Tile)
2. Gypsum (Fingernail)	7. Quartz (Unglazed Porcelain)
3. Calcite (Penny)	8. Topaz (Granite)
4. Flourite (Some Marbles)	9. Corundum (Ruby)
5. Apatite (Knife Blade)	10. Diamond (Diamond)

Industry standard ≤175mm²

Wear Resistance

PEI RATING
UNI EN ISO
10545.7

- Class 1: Walls only
 - Class 2: Residential floors w/minimal abrasive traffic
 - Class 3: Residential interiors/light commercial traffic
 - Class 4: Medium commercial applications
 - Class 5: All commercial applications/heavy traffic
- *Wear can vary greatly. please consult with a professional.*

Stain Resistance

ASTM C1378-04
UNI EN ISO
10545.14

- 5: Removed after 5 minutes (hot water running)
- 4: Removed by manual cleaning (weak detergent)
- 3: Removed by mechanical cleaning (strong detergent)
- 2: Removed by immersion (24 hrs in suitable solvent)
- 1: Stain not removed

Water Absorption

ASTM C-373
UNI EN ISO
10545.3

Water Absorption	Impervious Interior/Exterior Frost Resistant	Vitreous Interior/Exterior Frost Resistant	Semi-Vitreous Indoor Use Only	Non-Vitreous Indoor Use Only
<input checked="" type="checkbox"/> Absorbs 0-.5%	<input type="checkbox"/> Absorbs .5-3%	<input type="checkbox"/> Absorbs 3-7%	<input type="checkbox"/> Absorbs 7% +	

Breaking Strength

ASTM C648
UNI EN ISO
10545.4



Facial Dimension

ASTM c499-09
UNI EN ISO
10545.02

	Standard	Tolerance	Result
flatness	±5mm	±.5%	PASS
thickness	±6mm	±.5%	PASS
straightness	±4.5mm	±.5%	PASS
squareness	±5.4mm	±.6%	PASS
sides L/W	±1.1mm ±4.5mm	±.5%	PASS

Chemical Resistance

ASTM C650
UNI EN ISO
10545.13

Allowances for:	result
Acid	PASS
Bases	PASS
Chemicals	PASS

Leed Information

REQUIREMENTS FOR COMMERCIAL INTERIORS/NEW CONSTRUCTION

Sustainable Sites	1 Point
Site selection	
SS CREDIT 1 Heat Island Effect-non roof Material with a solar reflectant index of at least 29.	<input type="checkbox"/>
Energy & Atmosphere	1 Point
EA CREDIT 4 Green Power: Products that optimize energy performance for floors and walls using thermal conductivity. BTU-FT	<input type="checkbox"/>
Indoor Environmental Quality Low-Emitting Materials-Flooring Systems	1 Point
IEQ CREDIT 3.1-7 Green Cleaning: Reducing occupants exposure to hazardous cleaning chemicals.	<input type="checkbox"/>
IEQ CREDIT 4.1 Low Emitting Adhesives: Products less than 65 G/L VOC	<input checked="" type="checkbox"/>
IEQ CREDIT 4.3 Low Emitting Materials: Flooring systems.	<input type="checkbox"/>

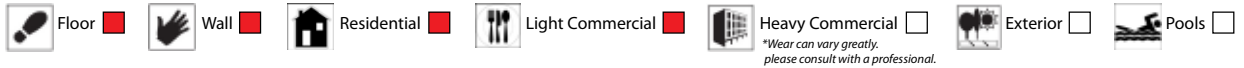
Materials & Resources	1 Point	2 Points
M&R CREDIT 2 Construction Waste Management: Recycling salvaged construction waste in to new reusable materials.	50% <input checked="" type="checkbox"/>	70% <input type="checkbox"/>
M&R CREDIT 4.1-4.2 Recycled Content: The sum of post consumer plus 1/2 of the pre consumer reps at least 10-20% of total value of materials.	10% <input type="checkbox"/>	20% <input checked="" type="checkbox"/>
M&R CREDIT 5 Regional Materials: Materials manufactured within 500 miles of the project site.	10% <input checked="" type="checkbox"/>	20% <input type="checkbox"/>
Innovation in Design	1-5 Points	
ID CREDIT 1 Innovation in Design Measurable exemplary environmental performance.	<input type="checkbox"/>	

Type: **Porcelain Stoneware**

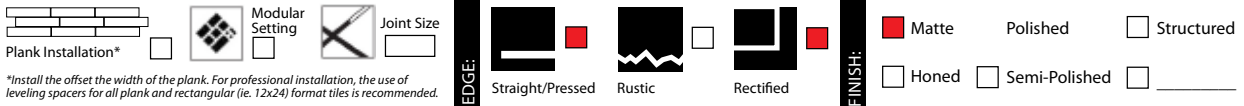
Product Line: **Venezia (polished)**

The marketing name for this product is property of Canos Tile & Stone. This same product may be marketed under different names.

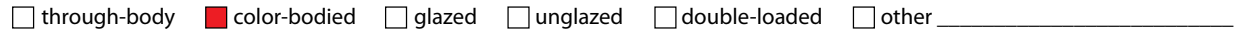
Suggested Applications



Installation Suggestions



Porcelain Type



Shade Variation



Slip Resistance

DCOF	Values	Applications
<input checked="" type="checkbox"/> >0.42	0.42	Recommended Standard DCOF value for wet/dry commercial flooring
<input type="checkbox"/>	0.65	Recommended Standard DCOF value for ADA ramps

ASTM C-1028
ANSI A137.1
DIN 51097/51130

DIN 51130 *R9: Industry Standard/ADA Requirements **R11: Recommended For Exteriors
 R9* (3-10°) R10 (10-19°) R11** (19-27°)
 R12 (27-35°) R13 (>35°)

DIN 51097

Class	Typical Applications	Critical Angle
<input checked="" type="checkbox"/> A	Barefoot, but mainly dry aisles and walkways, dry changing areas	≥12°
<input type="checkbox"/> B	Shower rooms, pool surrounds, wet changing areas, disinfectant spray areas (plus all Class A areas)	≥18°
<input type="checkbox"/> C	Areas constantly under water, e.g. steps into pools, foot baths, included pool surrounds, jacuzzis (plus all Class A&B areas)	≥24°

Scratch Resistance

MOH'S SCALE
UNI EN ISO
10545.6

6

MINERAL	
1. Talc (Talc)	6. Microline (Glass, Glazed Tile)
2. Gypsum (Fingernail)	7. Quartz (Unglazed Porcelain)
3. Calcite (Penny)	8. Topaz (Granite)
4. Flourite (Some Marbles)	9. Corundum (Ruby)
5. Apatite (Knife Blade)	10. Diamond (Diamond)

Industry standard ≤175mm²

Wear Resistance

PEI RATING
UNI EN ISO
10545.7

- Class 1: Walls only
 - Class 2: Residential floors w/minimal abrasive traffic
 - Class 3: Residential interiors/light commercial traffic
 - Class 4: Medium commercial applications
 - Class 5: All commercial applications/heavy traffic
- *Wear can vary greatly. please consult with a professional.*

Stain Resistance

ASTM C1378-04
UNI EN ISO
10545.14

3

- 5: Removed after 5 minutes (hot water running)
- 4: Removed by manual cleaning (weak detergent)
- 3: Removed by mechanical cleaning (strong detergent)
- 2: Removed by immersion (24 hrs in suitable solvent)
- 1: Stain not removed

Water Absorption

ASTM C-373
UNI EN ISO
10545.3



Absorbs 0-.5%	Absorbs .5-3%	Absorbs 3-7%	Absorbs 7% +
<input checked="" type="checkbox"/>	<input type="checkbox"/>	<input type="checkbox"/>	<input type="checkbox"/>
Impervious Interior/Exterior Frost Resistant	Vitreous Interior/Exterior Frost Resistant	Semi-Vitreous Indoor Use Only	Non-Vitreous Indoor Use Only

Breaking Strength

ASTM C648
UNI EN ISO
10545.4

≥35 n/mm²

Industry standard should be greater than
250 lbs
or
50 N/MM²

Facial Dimension

ASTM c499-09
UNI EN ISO
10545.02

	Standard	Tolerance	Result
flatness	±5mm	±.5%	PASS
thickness	±6mm	±.5%	PASS
straightness	±4.5mm	±.5%	PASS
squareness	±5.4mm	±.6%	PASS
sides L/W	±1.1mm ±4.5mm	±.5%	PASS

Chemical Resistance

ASTM C650
UNI EN ISO
10545.13



Allowances for:

	result
Acid	PASS
Bases	PASS
Chemicals	PASS

Leed Information



REQUIREMENTS
FOR COMMERCIAL
INTERIORS/NEW
CONSTRUCTION

Sustainable Sites	1 Point
Site selection	
SS CREDIT 1 Heat Island Effect-non roof Material with a solar reflectant index of at least 29.	<input type="checkbox"/>
Energy & Atmosphere	1 Point
EA CREDIT 4 Green Power: Products that optimize energy performance for floors and walls using thermal conductivity. BTU-FT	<input type="checkbox"/>
Indoor Environmental Quality	1 Point
IEQ CREDIT 3.1-7 Green Cleaning: Reducing occupants exposure to hazardous cleaning chemicals.	<input type="checkbox"/>
IEQ CREDIT 4.1 Low Emitting Adhesives: Products less than 65 G/L VOC	<input checked="" type="checkbox"/>
IEQ CREDIT 4.3 Low Emitting Materials: Flooring systems.	<input type="checkbox"/>

Materials & Resources	1 Point	2 Points
M&R CREDIT 2 Construction Waste Management: Recycling salvaged construction waste in to new reusable materials.	50% <input checked="" type="checkbox"/>	70% <input type="checkbox"/>
M&R CREDIT 4.1-4.2 Recycled Content: The sum of post consumer plus 1/2 of the pre consumer reps at least 10-20% of total value of materials.	10% <input type="checkbox"/>	20% <input checked="" type="checkbox"/>
M&R CREDIT 5 Regional Materials: Materials manufactured within 500 miles of the project site.	10% <input checked="" type="checkbox"/>	20% <input type="checkbox"/>
Innovation in Design	1-5 Points	
ID CREDIT 1 Innovation in Design Measurable exemplary environmental performance.	<input type="checkbox"/>	

Type: **Porcelain Stoneware**

Product Line: **Venezia (matte)**

The marketing name for this product is property of Canos Tile & Stone. This same product may be marketed under different names.



**The marketing name for this product is property of Cancos Tile Corp.
This same product may be marketed under different names.**