

ITALY *Porcelain Pavers*



CANCOS
TILE & STONE



Avatar

ANTRACITE · GRIGIO CHIARO · GRIGIO · TORTORA
NON-STOCK / SPECIAL ORDER (4-6 WEEKS)



antracite

grigio chiaro

grigio

tortora



PAVAVAN24 | 24 x 24 |



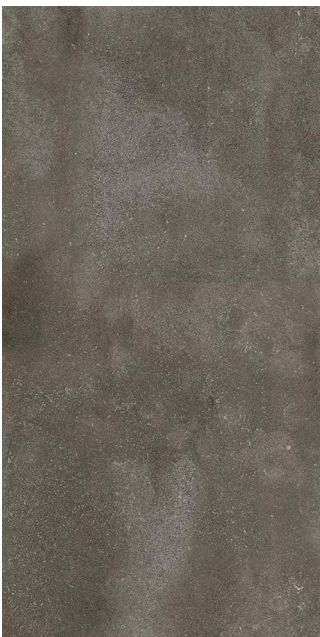
PAVAVGC24 | 24 x 24 |
*48x48 also available



PAVAVGR24 | 24 x 24 |
*48x48 also available



PAVAVTO24 | 24 x 24 |
*48x48 also available



PAVAVAN2448 | 24 x 48 |



PAVAVGC2448 | 24 x 48 |



PAVAVGR2448 | 24 x 48 |



PAVAVTO2448 | 24 x 48 |

Blue Stone

BLACK · GRAY

NON-STOCK / SPECIAL ORDER (4-6 WEEKS)



PAVBSSB24



black | 24 x 24 |

PAVBSSG24



gray | 24 x 24 |

Bouquet BLACK · GRAY
NON-STOCK / SPECIAL ORDER (4-6 WEEKS)



PAVBQBK2436



black | 24 x 36 |

PAVBQGR2436



gray | 24 x 36 |

Cliff

BIANCO · GRIGIO · NERO · NOCE

NON-STOCK / SPECIAL ORDER (4-6 WEEKS)



PAVCLBI32



bianco

| 32 x 32 |

PAVCLGR32



grigio

| 32 x 32 |

PAVCLNE32



nero

| 32 x 32 |

PAVCLNO32



noce

| 32 x 32 |

Element

DUNE · NUIT · OPAL · TAUPE

NON-STOCK / SPECIAL ORDER (6-8 WEEKS)



PAVELTA32



taupe | 32 x 32 |

PAVELTA24



taupe | 24 x 24 |

PAVELTA2448



taupe | 24 x 48 |

PAVELDU32



dune | 32 x 32 |

PAVELDU24



dune | 24 x 24 |

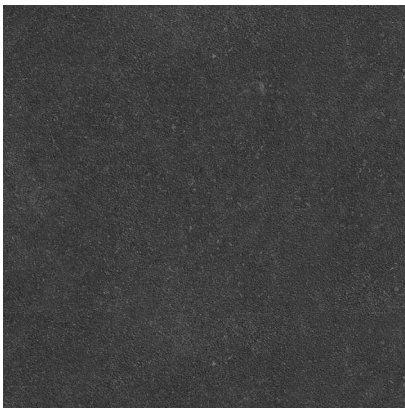
PAVELDU2448



dune | 24 x 48 |



PAVELNU32



nuit | 32 x 32 |

PAVELNU24



nuit | 24 x 24 |

PAVELNU2448



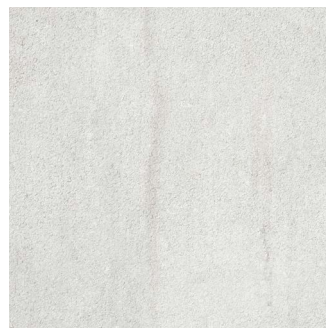
nuit | 24 x 48 |

PAVELOP32



opal | 32 x 32 |

PAVELOP24



opal | 24 x 24 |

PAVELOP2448

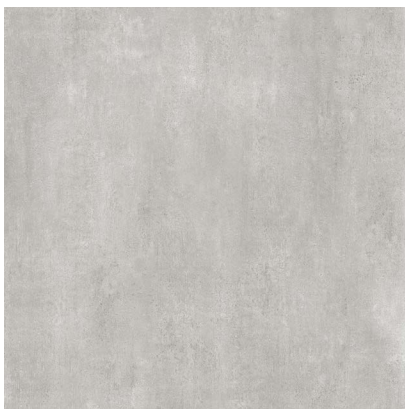


opal | 24 x 48 |

Primi CEMENTO · CENERE · SANDALO
NON-STOCK / SPECIAL ORDER (6-8 WEEKS)



PAVPMCM32



cemento | 32 x 32 |

PAVPMCM24

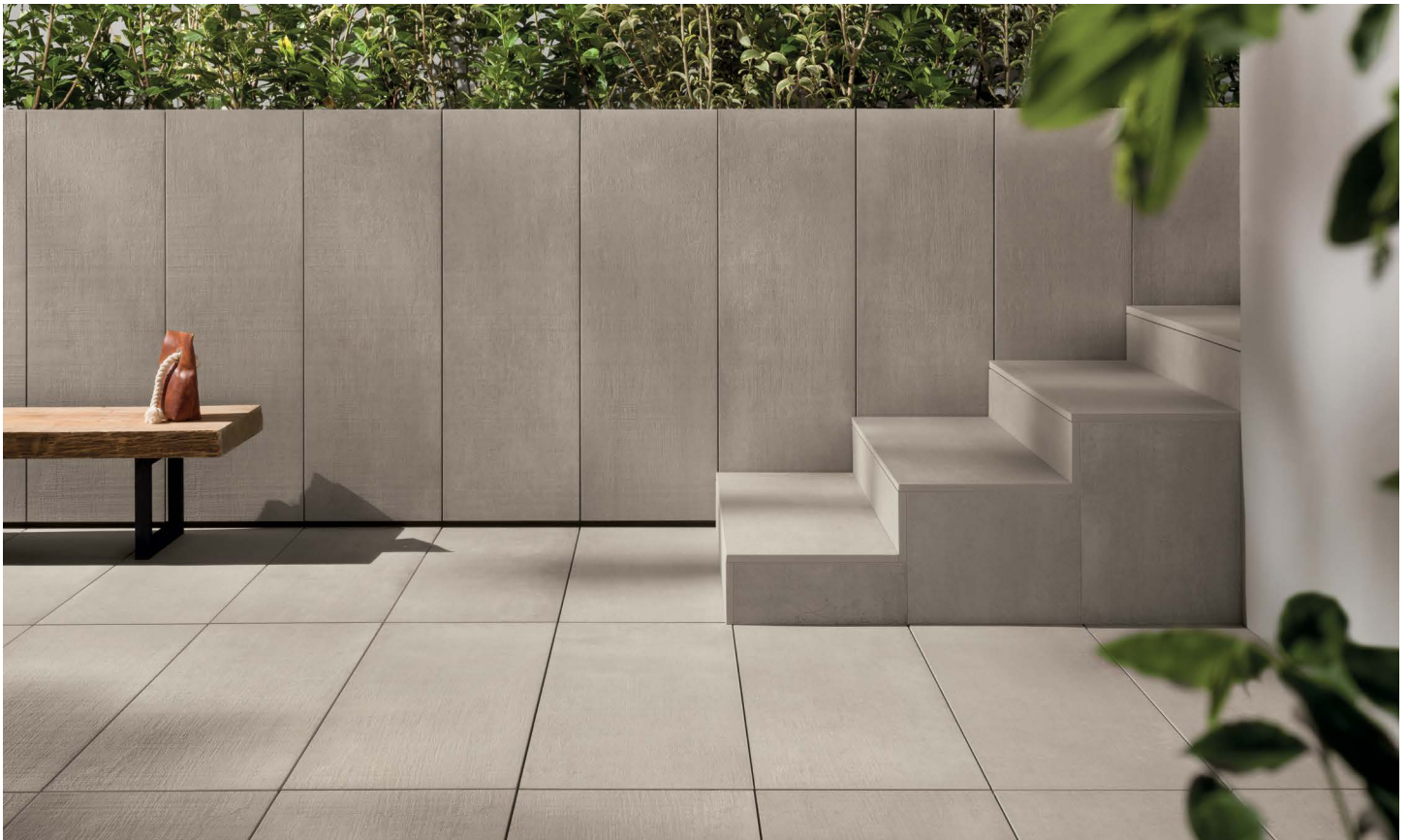


cemento | 24 x 24 |

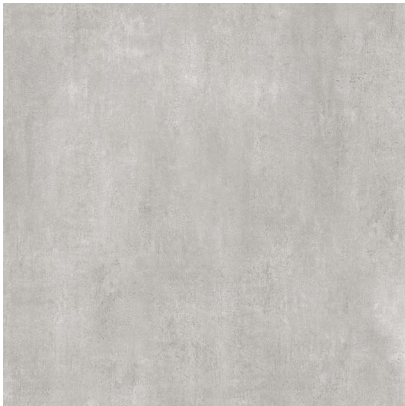
PAVPMCM1648



cemento | 16 x 48 |



PAVPMCN32



cenere | 32 x 32 |

PAVPMCN24



cenere | 24 x 24 |

PAVPMCN1648



cenere | 16 x 48 |

PAVPMSA32



sandalo | 32 x 32 |

PAVPMSA24



sandalo | 24 x 24 |

PAVPMSA1648



sandalo | 16 x 48 |

Rox ALTA · PORFIDO · SILVER BLACK · SILVER WHITE
NON-STOCK / SPECIAL ORDER (5-6 WEEKS)



PAVROAL24



alta

| 24 x 24 |

PAVSTAL2448



alta

| 24 x 48 |

PAVROPO24



porfido | 24 x 24 |

PAVROPO2448



porfido | 24 x 48 |

PAVROSB24



silver black | 24 x 24 |

PAVROSB2448



silver black | 24 x 48 |

PAVROSW24



silver white | 24 x 24 |

PAVROSW2448



silver white | 24 x 48 |

Soap Stone DARK · LIGHT

NON-STOCK / SPECIAL ORDER (4-6 WEEKS)



PAVSSDA2448
PAVSSDA1632

PAVSSLI2448
PAVSSLI1632



dark | 24 x 48, 16 x 32 |



light | 24 x 48, 16 x 32 |

Sal

BEIGE · GRIGIO · NERO

NON-STOCK / SPECIAL ORDER (4-6 WEEKS)



PAVSOBE24



beige

| 24 x 24 |

PAVSOGR24



grigio

| 24 x 24 |

PAVSONE24



nero

| 24 x 24 |

Wood MAPLE

NON-STOCK / SPECIAL ORDER (5-6 WEEKS)



PAVWOMA24



| 24 x 24 |

PAVWOMA848



| 8 x 48 |

PAVWOMA1648



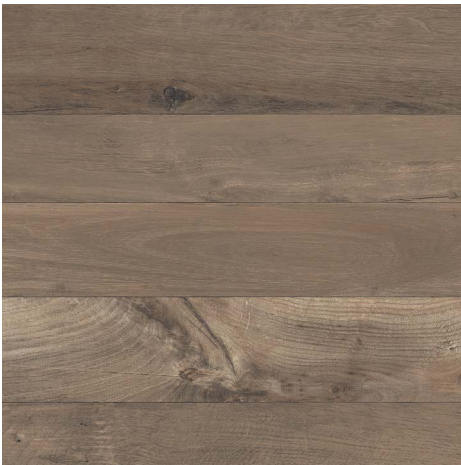
| 16 x 48 |

Wood NUT

NON-STOCK / SPECIAL ORDER (5-6 WEEKS)



PAVWONU24



| 24 x 24 |

PAVWONU848



| 8 x 48 |

PAVWONU1648



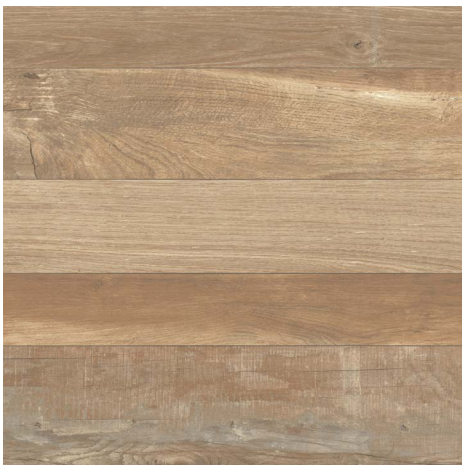
| 16 x 48 |

Wood OAK

NON-STOCK / SPECIAL ORDER (5-6 WEEKS)



PAVWOOA24



| 24 x 24 |

PAVWOOA848



| 8 x 48 |

PAVWOOA1648



| 16 x 48 |

Zenith GRIGIO

NON-STOCK / SPECIAL ORDER (4-6 WEEKS)



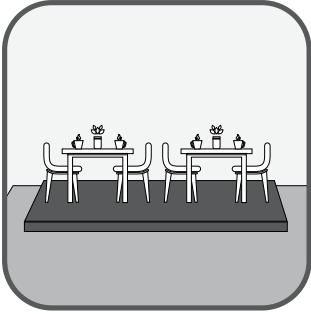
PAVZEGR2436



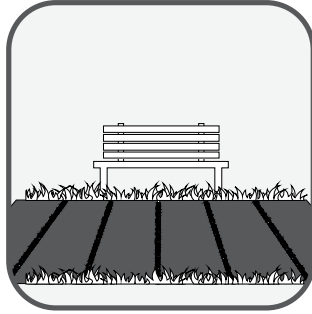
grigio

| 24 x 36 |

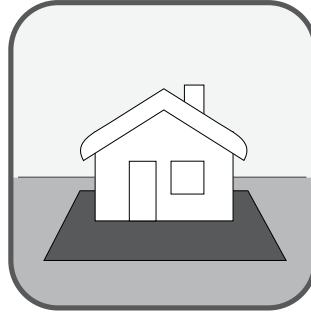
where to install
2CM PORCELAIN PAVERS



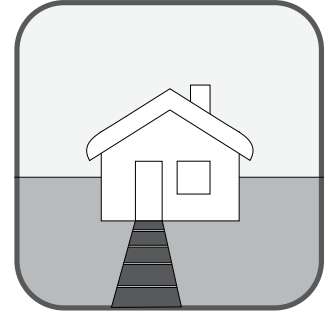
Sidewalk cafes



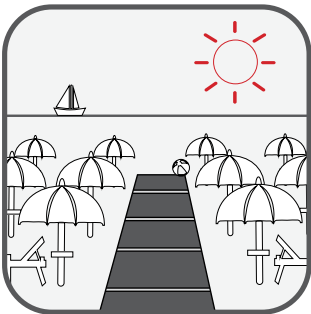
Walkways and pathways



Gardens and patios



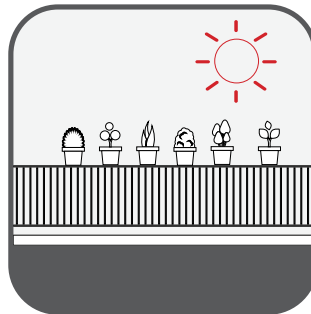
Garden paths



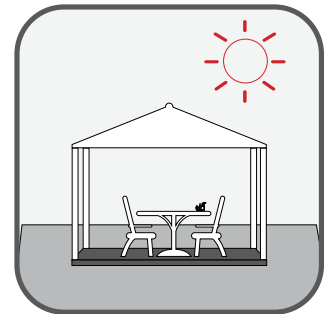
Beach resorts



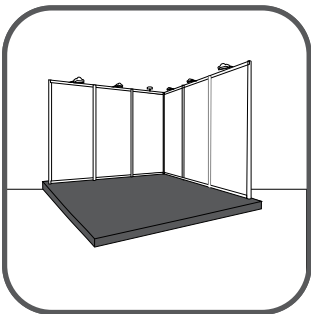
Swimming-pools



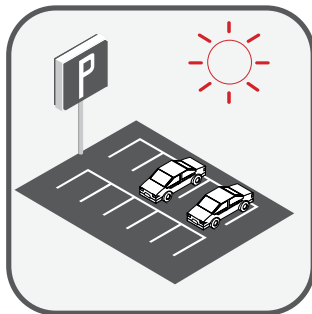
Terraces and balconies



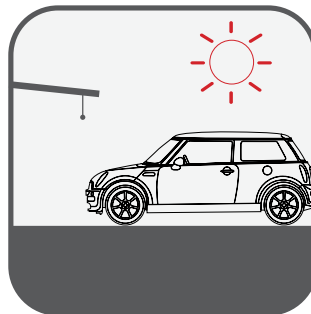
Gazebos



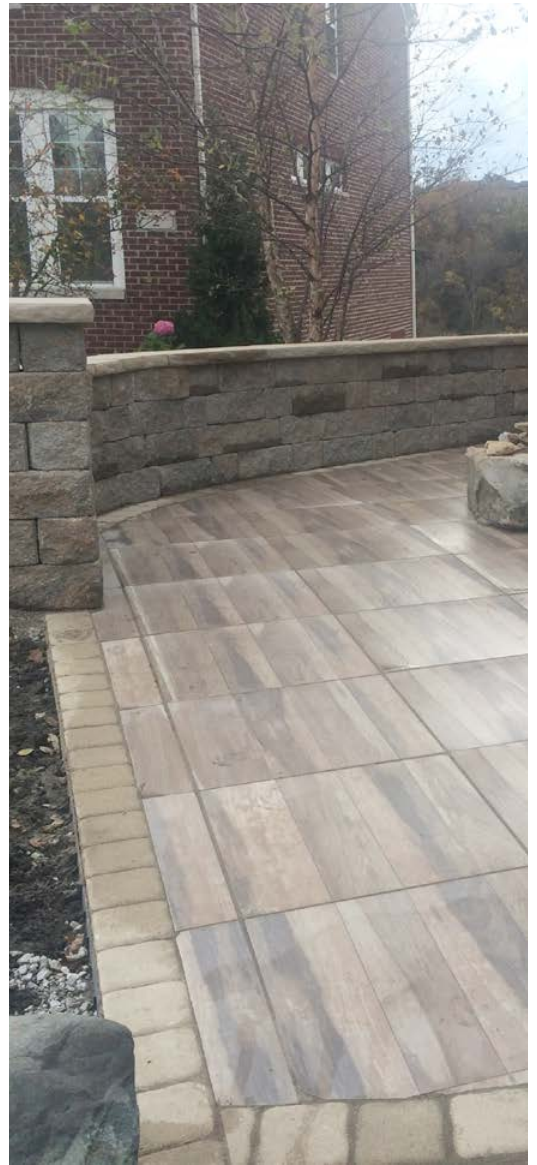
Exhibitions and events



Public parks



Public parkings



why choose 2CM PORCELAIN PAVERS?



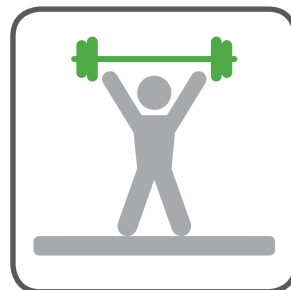
Thermal shock resistant.
(-40°F - 210°F)



Superior in fire resistance
and durability to wood tiles



Easy to clean. Stain,
chemical and salt resistant



Superior in strength and
impact resistance to
ceramic tiles (supports over
2000lb), lighter and easier
to handle than concrete
blocks



Virtually no maintenance



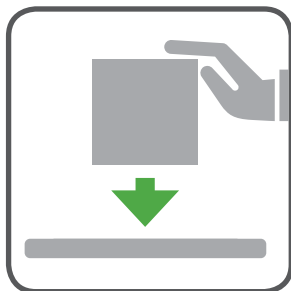
Slip resistant and quick
draining



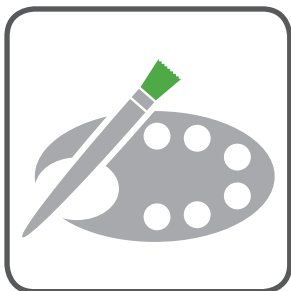
Easy to install



Removable and reusable
POPA 2.0 is ideal both for
temporary flooring and for
permanent flooring



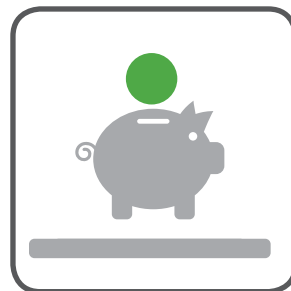
Versatile installation.
Various installation methods
including pedestal set,
gravel and grass set.
They offer endless
opportunities for landscape
design creativity in both
domestic and commercial
applications.



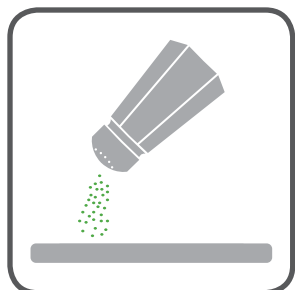
Fade resistant



Available in a broad range
of colors/styles



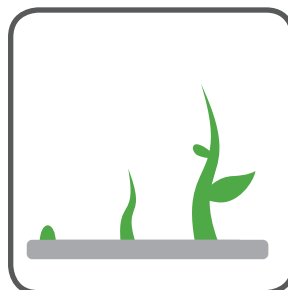
Massive over life cost
savings more cost effective
than grating or grid
structures for elevated
paving installations



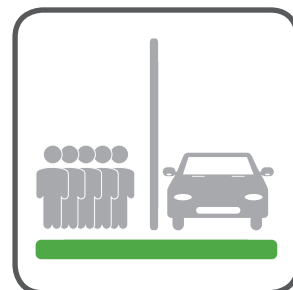
Resistant to salt corrosion.



Resistant to attack from mould, moss and verdigris treatments.



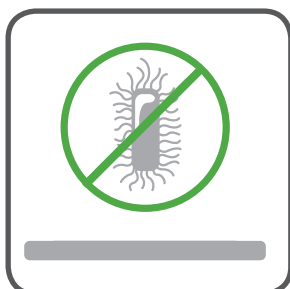
Resistant to efflorescence and other marks.



Durable: resistant to heavy vehicle and pedestrian traffic.



Frost-proof.



Hypoallergenic. No VOC.



Easy to sterilize.



Eco-friendly maintenance.



Easy to clean.



Recyclable and ecological.



New solution in extra-thick porcelain stoneware for outdoor trilling. 2 cm thick, colored fine porcelain stoneware slabs obtained from atomizing high-class clays, quartzes and metal oxides pressed at 400 kg/cm², completely sintered at a temperature of 1200°C and then squared using a system of abrasive grinders.

technical characteristics of 2CM PORCELAIN PAVERS

STANDARDS



ISO 10545-3	Water absorption	$E < = 0,5 \%$	0,05 %
ISO 10545-9v	Thermal shock resistance	Requested	Complies with standard
ISO 10545-12	Frost resistance	Requested	Complies with standard
ISO 10545-6	Abrasive wear	$< 175 \text{ mm}^2$	139 mm^2
ISO 10545-2	Thickness	$\pm 5,0 \%$ MAX	Complies with standard
	Length and width	$\pm 0,6 \%$ MAX	Complies with standard
ISO 10545-4	Bending strength	$S_p > / = 7,5 \text{ mm}$ $S > / = 1300 \text{ N}$	S 10.000 N sp. 15 S 13.600 N sp. 20
ISO 10545-14	Resistance to stain	-	5
ISO 10545-13	Chemical resistance	UB min.	UA ULA UHA
ISO 10545-8	Coefficient of linear thermal-expansion	-	60 $6,3 \times 10 \text{ c}'$
ISO 10545-5	Impact resistance	-	0,88
EN 12825	Static load	-	Centre 9,6 Kn Centre point of sides 6,5 Kn Diagonal 8,19 Kn (CLASSE 3)
	Dymanic laod capacity - hand object impact test	-	Test not passed
	Dymanic laod capacity - soft object impact test	-	Test passed
EN 1339	Bendind strength - breaking force in N	Kn 14,38	classe 14
ENV 12633	Pendulum Test - Slip resistance	$> / = \text{CL1}$	CL 2
DIN 51130	Slip resistance	-	R11
DIN 51097	Slip resistance	-	A + B + C min.
DIN 51094	Color resistance to light	Tiles must not produce noticeable colour variation	Resistant
DM 236/89 B.C.R.A.	Slip resistance	-	$> 0,40$
ASTM 1028-07 BOT 3000	Slip resistance	-	$> 0,60 \text{ WET}$ $> 0,60 \text{ DRY}$ $> 0,42$
EN 13501-1	Fire resistance	-	A1 - A1 FL



BAGNI CHRISTIAN, RIMINI, ITALY



I'PARK MALL, SEOUL, KOREA



I'PARK MALL, SEOUL, KOREA



ERACLE SPORTS CENTER, COMO, ITALY



BUCAREST, ROMANIA



BRISBANE, AUSTRALIA



RESIDENZA SAN MARTINO, LUGANO, SWITZERLAND



ADMIRAL PARK HOTEL, BOLOGNA, ITALY



HOTEL, STOCKHOLM, SWEDEN



PRIVATE HOUSE, POLAND



THE THEATER OF DISAPPEARANCE
Adrian Villar Rojas
Metropolitan Museum of Art, New York
14/04/2017 - 29/10/2017

Photos:
CANCOS TILE AND STONE

