

Matte

porcelain stoneware



CANCOS
TILE & STONE

GREIGE





DOMMTGG1224



| 12x24 |

DOMMTGG32



| 32x32 |

DOMMTGGMOS22



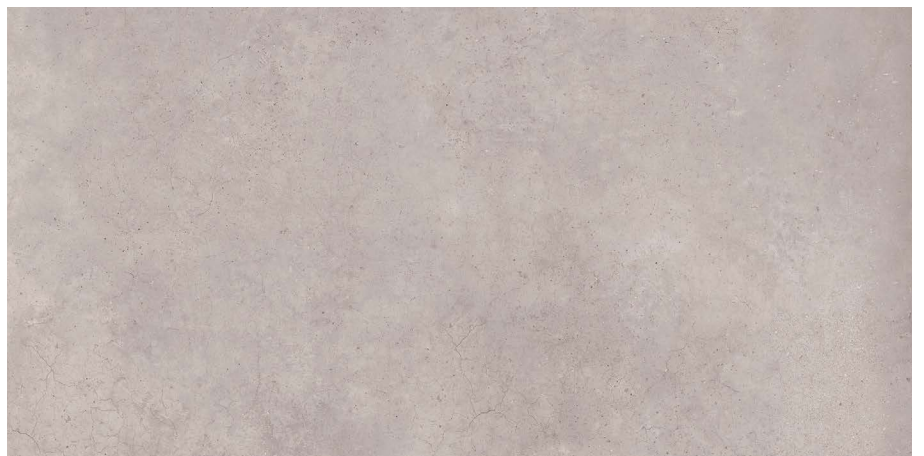
| 2x2 mosaic |

DOMMTGG24



| 24x24 |

DOMMTGG2448



| 24x48 |

SAND





sand

DOMMTSA1224



| 12x24 |

DOMMTSA32



| 32x32 |

DOMMTSAMOS22



| 2x2 mosaic |

DOMMTSA24



| 24x24 |

DOMMTSA2448



| 24x48 |

SILVER





DOMMTSI1224



| 12x24 |

DOMMTSI32



| 32x32 |

DOMMTSIMOS22



| 2x2 mosaic |

DOMMTSI24



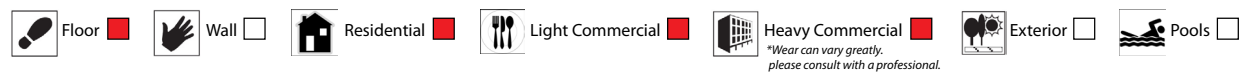
| 24x24 |

DOMMTSI2448



| 24x48 |

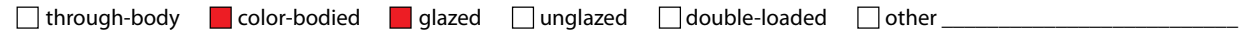
Suggested Applications



Installation Suggestions



Porcelain Type



Shade Variation



Slip Resistance

DCOF	Values	Applications
>.42	0.42	Recommended Standard DCOF value for wet/dry commercial flooring
	0.65	Recommended Standard DCOF value for ADA ramps

DIN 51130 *R9: Industry Standard/ADA Requirements **R11: Recommended For Exteriors

R9* (3-10°) R10 (10-19°) R11** (19-27°)
 R12 (27-35°) R13 (>35°)

DIN 51097

Class	Typical Applications	Critical Angle
<input type="checkbox"/> A	Barefoot, but mainly dry aisles and walkways, dry changing areas	≥12°
<input type="checkbox"/> B	Shower rooms, pool surrounds, wet changing areas, disinfectant spray areas (plus all Class A areas)	≥18°
<input type="checkbox"/> C	Areas constantly under water, e.g. steps into pools, foot baths, inclined pool surrounds, jacuzzis (plus all Class A&B areas)	≥24°

ASTM C-1028
ANSI A137.1
DIN 51097/51130

Scratch Resistance

MINERAL

1. Talc (Talc)	6. Microline (Glass, Glazed Tile)
2. Gypsum (Fingernail)	7. Quartz (Unglazed Porcelain)
3. Calcite (Penny)	8. Topaz (Granite)
4. Flourite (Some Marbles)	9. Corundum (Ruby)
5. Apatite (Knife Blade)	10. Diamond (Diamond)

Industry standard ≤175mm²

Wear Resistance

PEI RATING
UNI EN ISO
10545.7

- Class 1: Walls only
 - Class 2: Residential floors w/minimal abrasive traffic
 - Class 3: Residential interiors/light commercial traffic
 - Class 4: Medium commercial applications
 - Class 5: All commercial applications/heavy traffic
- *Wear can vary greatly. please consult with a professional.*

Stain Resistance

- 5: Removed after 5 minutes (hot water running)
 4: Removed by manual cleaning (weak detergent)
 3: Removed by mechanical cleaning (strong detergent)
 2: Removed by immersion (24 hrs in suitable solvent)
 1: Stain not removed

ASTM C1378-04
UNI EN ISO
10545.14 **3**

Water Absorption

ASTM C-373
UNI EN ISO
10545.3

	<input checked="" type="checkbox"/> Absorbs 0-.5%		<input type="checkbox"/> Absorbs .5-3%
	<input type="checkbox"/> Absorbs 3-7%		<input type="checkbox"/> Absorbs 7% +

Impervious Interior/Exterior Frost Resistant
 Vitreous Interior/Exterior Frost Resistant
 Semi-Vitreous Indoor Use Only
 Non-Vitreous Indoor Use Only

Breaking Strength



ASTM C648
UNI EN ISO
10545.4 **≥35 N/MM²**

Facial Dimension

ASTM c499-09
UNI EN ISO
10545.02

	Standard	Tolerance	Result
flatness	±5mm	±.5%	PASS
thickness	±6mm	±.5%	PASS
straightness	±4.5mm	±.5%	PASS
squareness	±5.4mm	±.6%	PASS
sides L/W	±1.1mm ±4.5mm	±.5%	PASS

Chemical Resistance

ASTM C650
UNI EN ISO
10545.13

Allowances for:

result

Acid

Bases

Chemicals

Leed Information



REQUIREMENTS FOR COMMERCIAL INTERIORS/NEW CONSTRUCTION

Sustainable Sites	1 Point	Materials & Resources	1 Point	2 Points
Site selection	1 Point	M&R CREDIT 2	1 Point	2 Points
SS CREDIT 1		Construction Waste Management: Recycling salvaged construction waste in to new reusable materials.	50% <input type="checkbox"/>	70% <input type="checkbox"/>
Heat Island Effect-non roof	<input checked="" type="checkbox"/>	M&R CREDIT 4.1-4.2	10% <input checked="" type="checkbox"/>	20% <input type="checkbox"/>
Material with a solar reflectant index of at least 29.		Recycled Content: The sum of post consumer plus 1/2 of the pre consumer reps at least 10-20% of total value of materials.	10% <input type="checkbox"/>	20% <input type="checkbox"/>
Energy & Atmosphere	1 Point	M&R CREDIT 5	10% <input type="checkbox"/>	20% <input type="checkbox"/>
EA CREDIT 4		Regional Materials: Materials manufactured within 500 miles of the project site.		
Green Power: Products that optimize energy performance for floors and walls using thermal conductivity. BTU-FT	<input type="checkbox"/>	Innovation in Design		1-5 Points
Indoor Environmental Quality	1 Point	ID CREDIT 1		
Low-Emitting Materials-Flooring Systems		Innovation in Design		
IEQ CREDIT 3.1-7		Measurable exemplary environmental performance.		
Green Cleaning: Reducing occupants exposure to hazardous cleaning chemicals.	<input checked="" type="checkbox"/>			
IEQ CREDIT 4.1				
Low Emitting Adhesives: Products less than 65 G/L VOC	<input type="checkbox"/>			
IEQ CREDIT 4.3				
Low Emitting Materials: Flooring systems.	<input checked="" type="checkbox"/>			

Type: **Porcelain Stoneware**

Product Line: **Matte**

The marketing name for this product is property of Cancos Tile & Stone. This same product may be marketed under different names.