

Ripple

glass tile



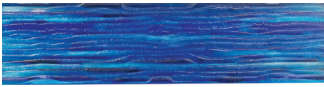
CANCOS
TILE & STONE

MIAMI BLUE

SEA GREEN

STONE GREY

GLARIMB28



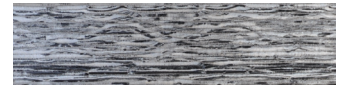
| 2x8 |

GLARISE28



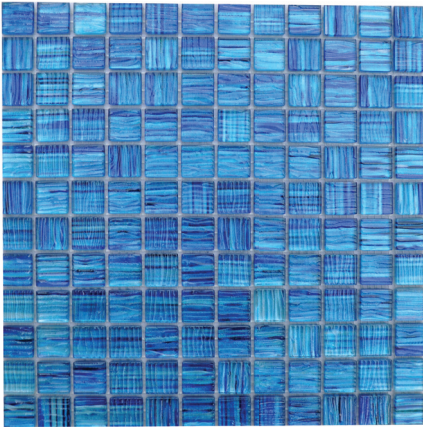
| 2x8 |

GLARIST28



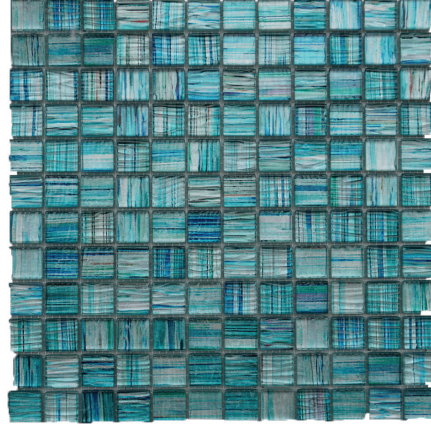
| 2x8 |

GLARIMB11



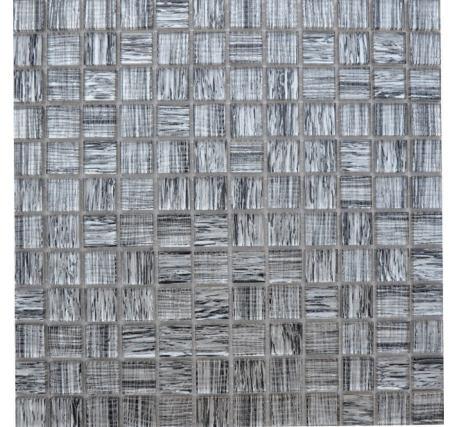
| 1x1 mosaic |

GLARISE11



| 1x1 mosaic |

GLARIST11



| 1x1 mosaic |

APPLICATION

	INTERIOR			EXTERIOR		
	R	LC	HC	R	LC	HC
Walls/Backsplashes	X	X	X			
Wet Areas*	X	X	X			
Countertops						
Submerged Areas*	X	X	X			

R - Residential LC - Light Commercial HC - Heavy Commercial

***For areas submerged in water, it is strictly recommended to use epoxy base for both the adhesive and grout.**

INSTALLATION

	CB	EB*
Mortar	X	X
Grout	X	X

CB - Cement Base EB - Epoxy Base

Glass Tile may be susceptible to scratching in handling and installation, as well as use. Expect variation of color from production run to production run. Please refer to the TCNA HANDBOOK for more specific information regarding installation.

MAINTENANCE

Use a non-abrasive cloth and neutral detergents for cleaning. Avoid acid detergents, chemicals and solvents.

The marketing name for this product is property of Cancos Tile Corp. This same product may be marketed under different names.