

Onix

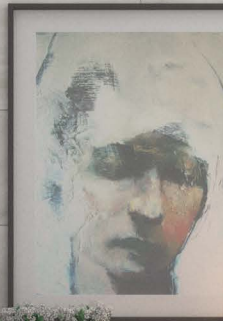
wall & floor tile



AGATA GREY

CANCOS
TILE & STONE

AGATA GREY





Agata Grey

BELOXAG1022



10x22 glossy wall tile

BELOXAG412



4x12 glossy wall tile

BELOXAGBN310



3x10 porcelain matte bullnose

BELOXAG1022D



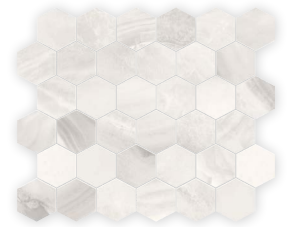
10x22 glossy textured wall tile

BELOXAGMOS22



2x2 porcelain matte mosaic

BELOXAGHEX



2x2 porcelain matte hex mosaic

BELOXAG12



12x12 porcelain matte floor tile

BELOXAG1224



12x24 porcelain matte floor tile

AGATA WHITE





Agata White

BELOXAW1022



10x22 glossy wall tile

BELOXAW412



4x12 glossy wall tile

BELOXAWBN310



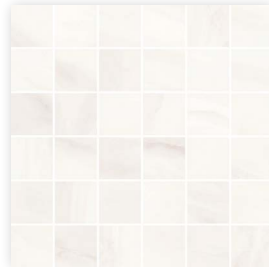
3x10 porcelain matte bullnose

BELOXAW1022D



10x22 glossy textured wall tile

BELOXAWMOS22



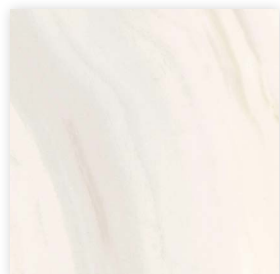
2x2 porcelain matte mosaic

BELOXAWHEX



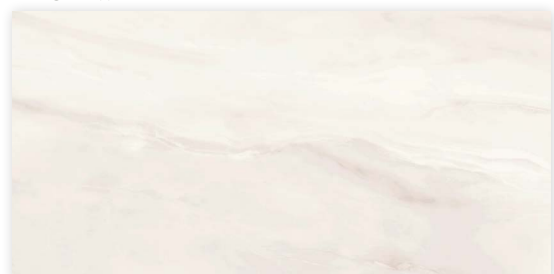
2x2 porcelain matte hex mosaic

BELOXAW12



12x12 porcelain matte floor tile

BELOXAW1224



12x24 porcelain matte floor tile

ONICE WHITE





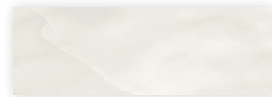
Onice White

BELOXOW1022



10x22 glossy wall tile

BELOXOW412



4x12 glossy wall tile

BELOXOWBN310



3x10 porcelain matte bullnose

BELOXOW1022D



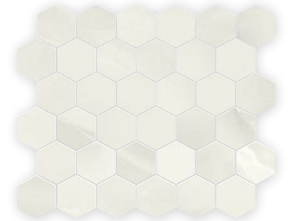
10x22 glossy textured wall tile

BELOXOWMOS22



2x2 porcelain matte mosaic

BELOXOWHEX



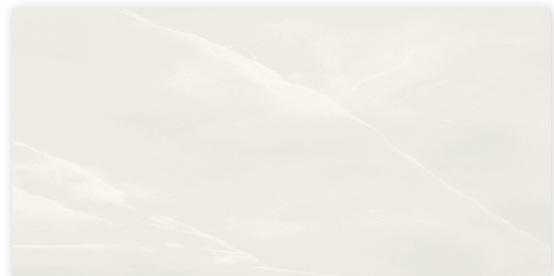
2x2 porcelain matte hex mosaic

BELOXOW12



12x12 porcelain matte floor tile

BELOXOW1224



12x24 porcelain matte floor tile

CERAMIC WALL SPECS

Tile Thickness	5/16"
Minimum Grout Joint Recommendation	1/8"
Shade Variation	V2

D.C.O.F. Wet	Moisture Absorption	Breaking Strength	MOH's Rating	Chemical Resistance	Abrasion Resistance
	<20%	100-230 lbs	4.0-6.5	Resistant	N/A

	INTERIOR			EXTERIOR	
APPLICATION	Residential	Light Commercial	Commercial	Residential	Commercial
Floors / Patios (covered & uncovered)					
Walls / Backsplashes	X	X	X		

PORCELAIN SPECS

Suggested Applications

Floor Wall Residential Light Commercial Heavy Commercial Exterior Pools

*Wear can vary greatly. please consult with a professional.

Installation Suggestions

Plank Installation* Modular Setting Joint Size 3mm

*Install the offset the width of the plank. For professional installation, the use of leveling spacers for all plank and rectangular (ie. 12x24) format tiles is recommended.

EDGE: Straight/Pressed Rustic Rectified

FINISH: Matte Polished Structured Honed Semi-Polished

Porcelain Type

through-body color-bodied glazed unglazed double-loaded other

Shade Variation

V1 Uniform Appearance V2 Slight Variation V3 Moderate Variation V4 Substantial Variation

THICKNESS: 9mm **# OF FACES:**

Slip Resistance

DCOF	Values	Applications
0.42	0.42	Recommended Standard DCOF value for wet/dry commercial flooring
	0.65	Recommended Standard DCOF value for ADA ramps

ASTM C-1028
ANSI A137.1
DIN 51097/51130

DIN 51130 *R9: Industry Standard/ADA Requirements **R11: Recommended For Exteriors
 R9* (3-10°) R10 (10-19°) R11** (19-27°)
 R12 (27-35°) R13 (>35°)

Class	Typical Applications	Critical Angle
<input checked="" type="checkbox"/> A	Barefoot, but mainly dry aisles and walkways, dry changing areas	≥12°
<input type="checkbox"/> B	Shower rooms, pool surrounds, wet changing areas, disinfectant spray areas (plus all Class A areas)	≥18°
<input type="checkbox"/> C	Areas constantly under water, e.g. steps into pools, foot baths, inclined pool surrounds, jacuzzis (plus all Class A&B areas)	≥24°

Scratch Resistance

MINERAL
 1. Talc (Talc) 6. Microline (Glass, Glazed Tile)
 2. Gypsum (Fingernail) 7. Quartz (Unglazed Porcelain)
 3. Calcite (Penny) 8. Topaz (Granite)
 4. Flourite (Some Marbles) 9. Corundum (Ruby)
 5. Apatite (Knife Blade) 10. Diamond (Diamond)

MOH'S SCALE
UNI EN ISO 10545.6

Industry standard ≤175mm²

Wear Resistance

Class 1: Walls only
 Class 2: Residential floors w/minimal abrasive traffic
 Class 3: Residential interiors/light commercial traffic
 Class 4: Medium commercial applications
 Class 5: All commercial applications/heavy traffic

PEI RATING
UNI EN ISO 10545.7

*Wear can vary greatly. please consult with a professional.

Stain Resistance

5: Removed after 5 minutes (hot water running)
 4: Removed by manual cleaning (weak detergent)
 3: Removed by mechanical cleaning (strong detergent)
 2: Removed by immersion (24 hrs in suitable solvent)
 1: Stain not removed

ASTM C1378-04
UNI EN ISO 10545.14

3-5


Water Absorption

Absorbs 0-.5% Absorbs .5-3% Absorbs 3-7% Absorbs 7%+

Impervious Interior/Exterior Frost Resistant Vitreous Interior/Exterior Frost Resistant Semi-Vitreous Indoor Use Only Non-Vitreous Indoor Use Only

ASTM C-373
UNI EN ISO 10545.3

Breaking Strength



Industry standard should be greater than 250 lbs or 50 N/MM2

ASTM C648
UNI EN ISO 10545.4

>45 n/mm²

Facial Dimension

	Standard	Tolerance	Result
flatness	±5mm	±.5%	PASS
thickness	±6mm	±.5%	PASS
straightness	±4.5mm	±.5%	PASS
squareness	±5.4mm	±.6%	PASS
sides L/W	±1.1mm / ±4.5mm	±.5%	PASS

ASTM c499-09
UNI EN ISO 10545.02

Chemical Resistance

ASTM C650
UNI EN ISO 10545.13

Allowances for: result
 Acid **PASS**
 Bases **PASS**
 Chemicals **PASS**