

# USA Porcelain Pavers



**CANCOS**  
TILE & STONE



# Chalet BEIGE · BIANCO · DARK GRAY · GRAY

NON-STOCK / SPECIAL ORDER (1-2 WEEKS)



PAVCHBE24



beige | 24 x 24 |

PAVCHBI24



bianco | 24 x 24 |

PAVCHDG24



dark gray | 24 x 24 |

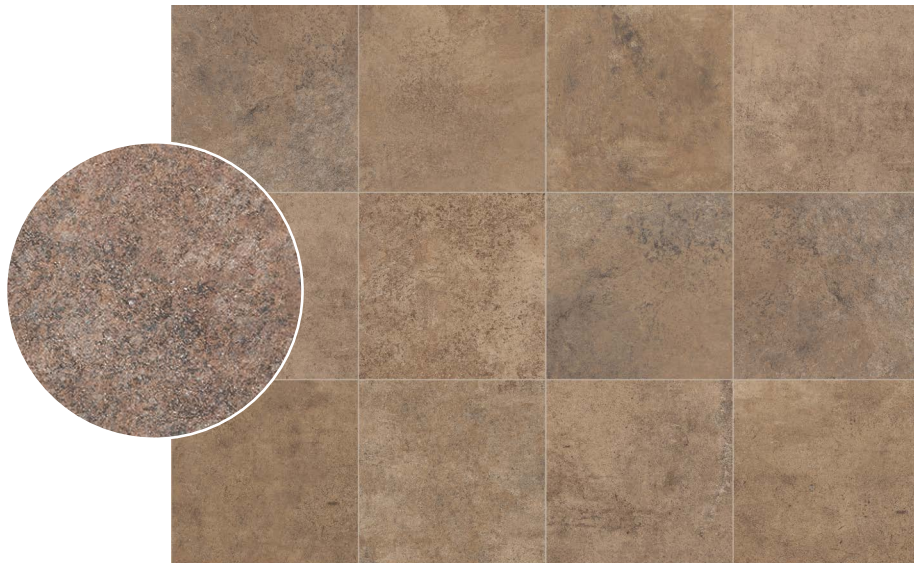
PAVCHGR24



gray | 24 x 24 |

# Cotta

NON-STOCK / SPECIAL ORDER (1-2 WEEKS)



PAVCOTT24



| 24 x 24 |

# *Essence* GRAPHITE · GRAY · WHITE

NON-STOCK / SPECIAL ORDER (1-2 WEEKS)



PAVESGP24



graphite | 24 x 24 |

PAVESGR24



gray | 24 x 24 |

PAVESWH24



white | 24 x 24 |

# *Garden* BIANCO · GRAY · NERO

NON-STOCK / SPECIAL ORDER (1-2 WEEKS)



PAVGABI24



bianco | 24 x 24 |

PAVGAGR24



gray | 24 x 24 |

PAVGANE24



nero | 24 x 24 |

# Hardwood BROWN · GREY · IVORY

NON-STOCK / SPECIAL ORDER (1-2 WEEKS)



PAVHABR24



brown

| 24 x 24 |

PAVHAGR24



grey

| 24 x 24 |

PAVHAIV24



ivory

| 24 x 24 |

# Mountain BEIGE · GREY · NOCE

NON-STOCK / SPECIAL ORDER (1-2 WEEKS)



PAVMTBE1648



beige | 16 x 48 |

PAVMTGR1648



grey | 16 x 48 |

PAVMTNO1648



noce | 16 x 48 |

*Maxie*

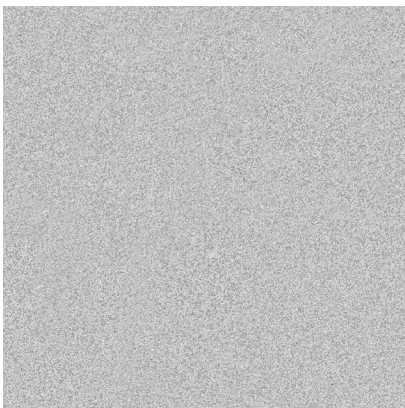
ASH · BASALT · BONE

COGNAC · LEATHER · SAND

NON-STOCK / SPECIAL ORDER (1-2 WEEKS)



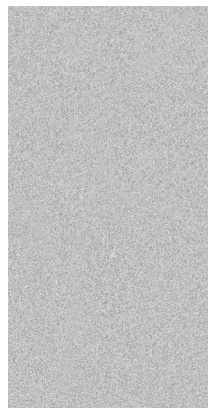
PAVMOAS24



ash

| 24 x 24 |

PAVMOAS1224



| 12 x 24 |

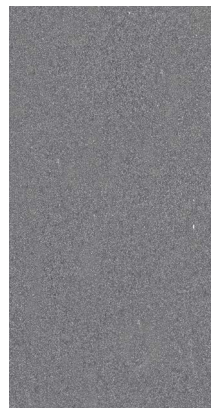
PAVMBAS24



basalt

| 24 x 24 |

PAVMOBA1224



| 12 x 24 |





PAVMOBO24



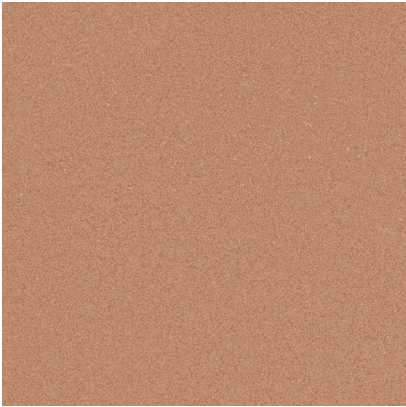
bone | 24 x 24 |

PAVMOBO1224



| 12 x 24 |

PAVMOCO24



cognac | 24 x 24 |

PAVMOCO1224



| 12 x 24 |

PAVMOLE24



leather | 24 x 24 |

PAVMOLE1224



| 12 x 24 |

PAVMOSA24



sand | 24 x 24 |

PAVMOSA1224



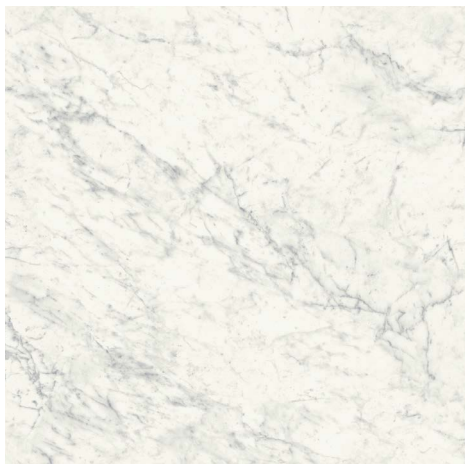
| 12 x 24 |

# National CARRARA · DOLOMITE

NON-STOCK / SPECIAL ORDER (1-2 WEEKS)



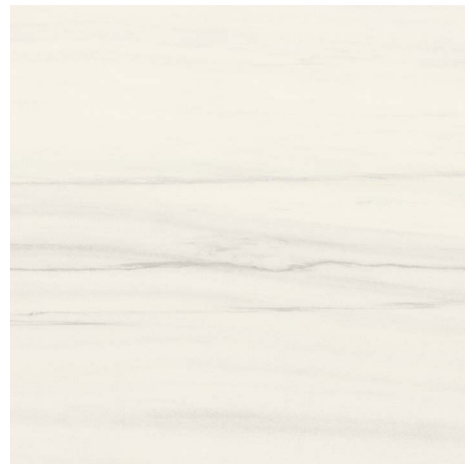
PAVNACR24



carrara

| 24 x 24 |

PAVNADO24



dolomite

| 24 x 24 |

# Northeast GREY · IVORY · WHITE

NON-STOCK / SPECIAL ORDER (1-2 WEEKS)



PAVNOGR1632

grey



| 16 x 32 |

PAVNOIV1632

ivory



| 16 x 32 |

PAVNOWH1632

white



| 16 x 32 |

PAVNOGR24



| 24 x 24 |

PAVNOIV24



| 24 x 24 |

PAVNOWH24



| 24 x 24 |

# *Oceanstone* BLACK · TAN · WHITE COOL

NON-STOCK / SPECIAL ORDER (1-2 WEEKS)



PAVOSBL24



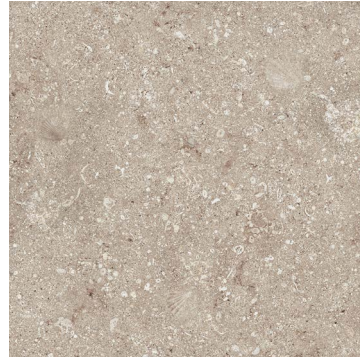
black | 24 x 24 |

PAVOSBL1224



| 12x 24 |

PAVOSTA24



tan | 24 x 24 |

PAVOSTA1224



| 12x 24 |

PAVOSBL2448



black | 24 x 48 |

PAVOSWC24



white cool | 24 x 24 |

PAVOSWC1224



| 12x 24 |

# Pennsylvania

FULL COLOR · TRUE BLUE

NON-STOCK / SPECIAL ORDER (1-2 WEEKS)



PAVPEFC24



full color

| 24 x 24 |

PAVPETB24



true blue

| 24 x 24 |

ALSO AVAILABLE IN:

12x12

(PAVPEFC12 / PAVPETB12)

12x24

(PAVPEFC1224 / PAVPETB1224)

12x48

(PAVPEFC1248 / PAVPETB1248)

24x48

(PAVPEFC2448 / PAVPETB2448)

12x24 BULLNOSE

(PAVPEFCBN1224 / PAVPETBBN1224)

*Primi 2* CEMENTO · CENERE · SANDALO  
NON-STOCK / SPECIAL ORDER (1-2 WEEKS)



PAVPMCM24



cemento | 24 x 24 |

PAVPMCN24



cenere | 24 x 24 |

PAVPMSA24



sandalò | 24 x 24 |

PAVPMCM2448



cemento | 24 x 48 |

PAVPMCN2448



cenere | 24 x 48 |

PAVPMSA2448



sandalò | 24 x 48 |

# Quartzite

CLOUD · CRYSTAL WHITE · LAGUNA · SANDY ISLAND

NON-STOCK / SPECIAL ORDER (1-2 WEEKS)



PAVQZCW24



crystal white | 24 x 24 |

PAVQZCW2448



crystal white | 24 x 48 |

PAVQZCL24



cloud | 24 x 24 |

PAVQZLA24



laguna | 24 x 24 |

PAVQZSI24



sandy island | 24 x 24 |

*Stone* CREAMSTONE · MOONSTONE  
NON-STOCK / SPECIAL ORDER (1-2 WEEKS)



PAVSNCR24



creamstone | 24 x 24 |

PAVSNCR2448



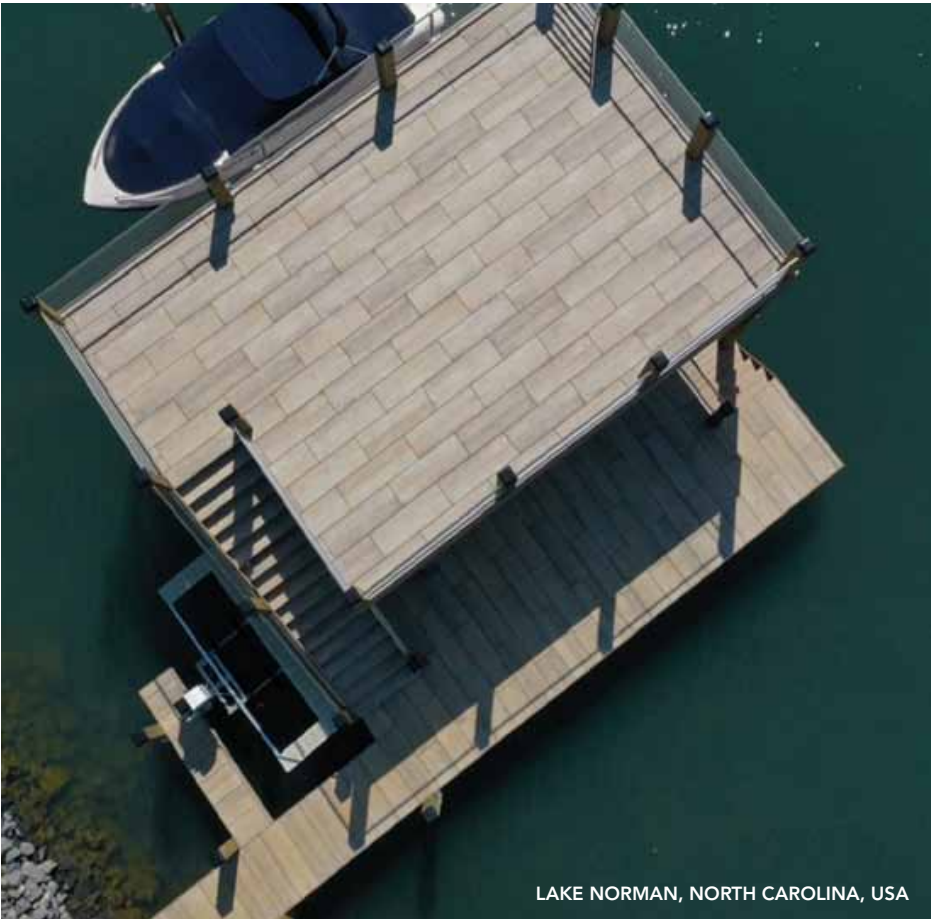
creamstone | 24 x 48 |

PAVSNMO24



moonstone | 24 x 24 |





LAKE NORMAN, NORTH CAROLINA, USA



MONT ROYAL, QUEBEC, CANADA



PRIVATE HOUSE, ARIZONA, USA



PRIVATE HOUSE, USA



PRIVATE HOUSE, USA



NAVARRE BEACH, FLORIDA, USA



PRIVATE HOUSE, USA



PRIVATE HOUSE, USA

# Techno

COOL GREY · CHARCOAL · COOL WHITE  
GREY BLACK · WHITE BLACK

NON-STOCK / SPECIAL ORDER (1-2 WEEKS)



PAVTEGB24



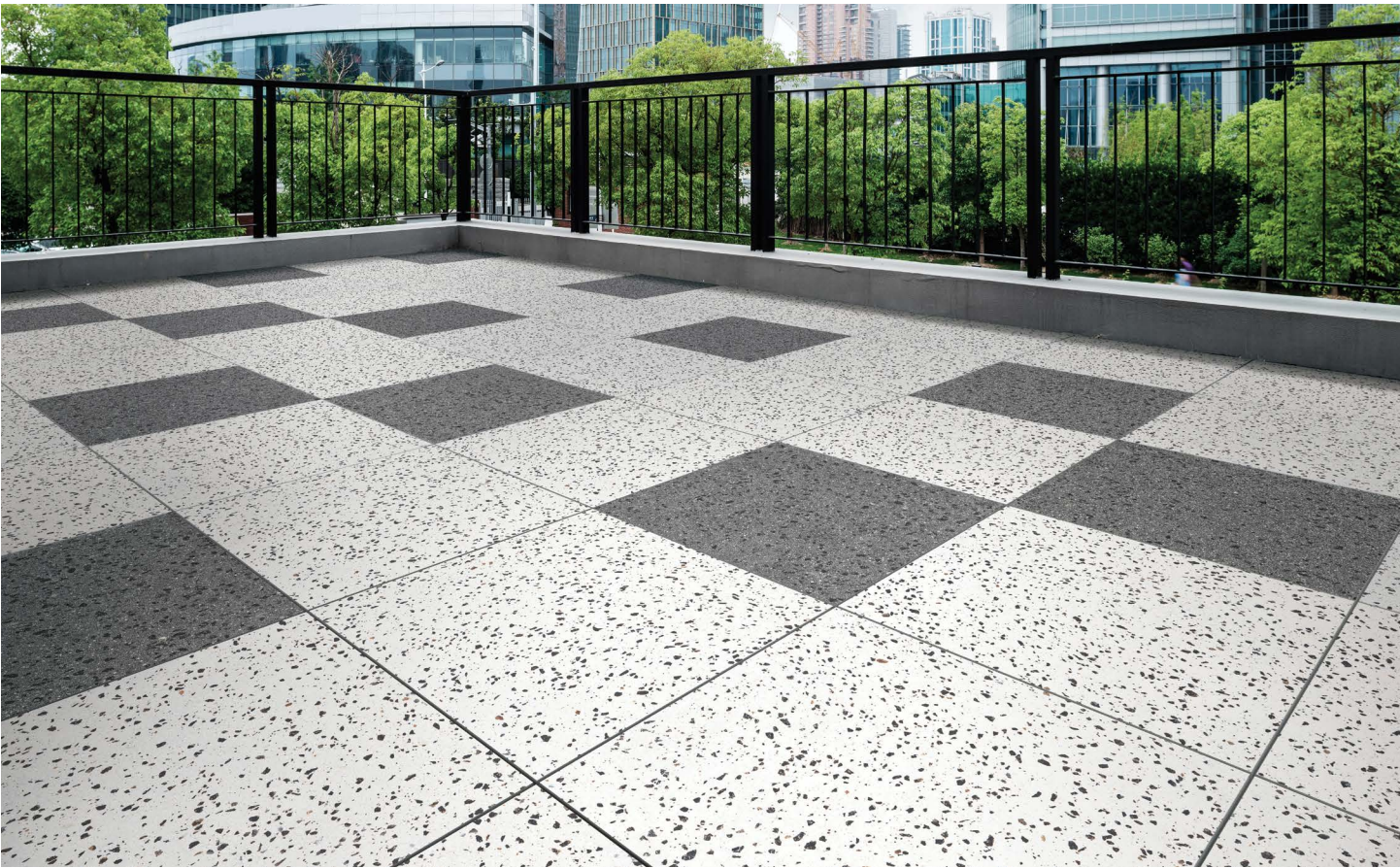
grey black

| 24 x 24 |

PAVTEGB1224



| 12 x 24 |



PAVTEWB24



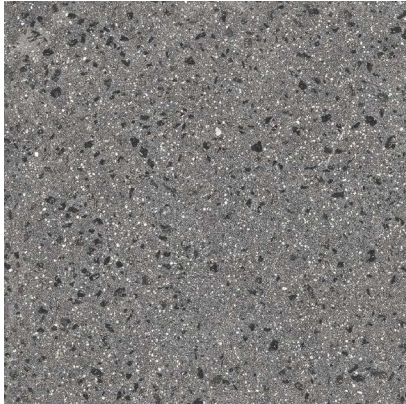
white black | 24 x 24 |

PAVTEWB1224



| 12 x 24 |

PAVTECH24



charcoal | 24 x 24 |

PAVTECH1224



| 12 x 24 |

PAVTECG24



cool grey | 24 x 24 |

PAVTECG1224



| 12 x 24 |

PAVTECW24



cool white | 24 x 24 |

PAVTECW1224



| 12 x 24 |

# Tivoli Travertine

NON-STOCK / SPECIAL ORDER (1-2 WEEKS)

AVORIO · CAPPUCCINO · CREMA · PEARL · RIVER · SHELL · SILVER · WALNUT



AVORIO

CAPPUCCINO

CREMA

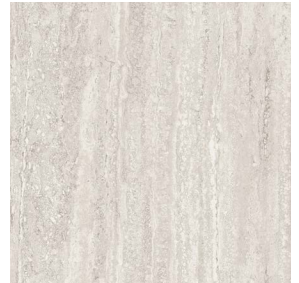
PEARL

PAVTTAV24

PAVTTCA24

PAVTTCR24

PAVTTPE24



| 24 x 24 |

| 24 x 24 |

| 24 x 24 |

| 24 x 24 |

PAVTTAV2448

PAVTTCA2448

PAVTTCR2448

PAVTTPE2448



| 24 x 48 |

| 24 x 48 |

| 24 x 48 |

| 24 x 48 |

\*ALSO AVAILABLE: 12X12 + 12X24



RIVER

SHELL

SILVER

WALNUT

PAVTTRI24

PAVTTSH24

PAVTTSI24

PAVTTWA24



| 24 x 24 |

| 24 x 24 |

| 24 x 24 |

| 24 x 24 |

PAVTTRI2448

PAVTTSH2448

PAVTTSI2448

PAVTTWA2448



| 24 x 48 |

| 24 x 48 |

| 24 x 48 |

| 24 x 48 |

\* ALSO AVAILABLE: 12X12 + 12X24





# Timber IPE · TEAK

NON-STOCK / SPECIAL ORDER (1-2 WEEKS)



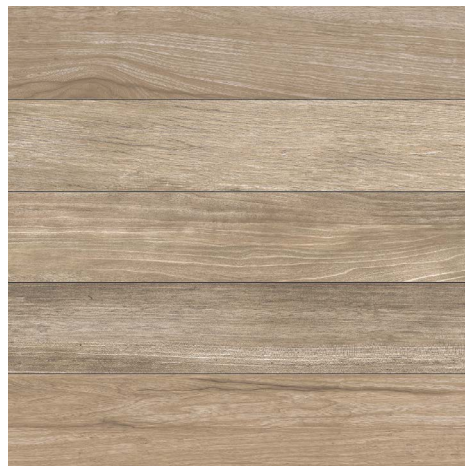
PAVTIIP24



ipe

| 24 x 24 |

PAVTITE24



teak

| 24 x 24 |



# *Travertini* BEIGE · GRAY

NON-STOCK / SPECIAL ORDER (1-2 WEEKS)



PAVTRBE1632



| 16 x 32 |

PAVTRBE24



beige | 24 x 24 |

PAVTRGR24



gray | 24 x 24 |

PAVTRGR1632



| 16 x 32 |

*Westside* BEIGE · GRAY · WHITE  
NON-STOCK / SPECIAL ORDER (1-2 WEEKS)



PAVWSGR24



gray

| 24 x 24 |

PAVWSWH24



white

| 24 x 24 |

# Garden

RECTIFIED MODULAR  
GRAY

# Travertini

RECTIFIED MODULAR  
BEIGE



PAVGAGR12MOD  
PAVGAGR24MOD  
PAVGAGR1224MOD



PAVTRBE12MOD  
PAVTRBE24MOD  
PAVTRBE1224MOD

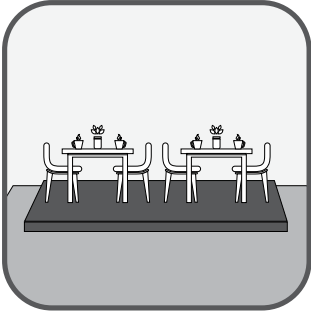
# technical characteristics of 2CM PORCELAIN PAVERS

STANDARDS

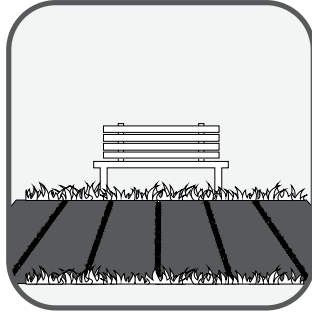
**CANCOS**  
FILE AND STONE

|                          |   |   |  |
|--------------------------|---|---|--|
| ISO<br>10545-3           | Water absorption                                | $E < = 0,5 \%$  | 0,05 %   |
| ISO<br>10545-9v          | Thermal shock resistance                        | Requested   | Complies with standard   |
| ISO<br>10545-12          | Frost resistance                                | Requested   | Complies with standard   |
| ISO<br>10545-6           | Abrasive wear                                   | $< 175 \text{ mm}^2$                                  | 139 $\text{mm}^2$  |
| ISO<br>10545-2           | Thickness                                       | $\pm 5,0 \%$ MAX                                      | Complies with standard   |
|                          | vvLength and width                              | $\pm 0,6 \%$ MAX                                      | Complies with standard   |
| ISO<br>10545-4           | Bending strength                                | $S_p > / = 7,5 \text{ mm}$ $S > / = 1300 \text{ N}$   | S 10.000 N sp. 15<br>S 13.600 N sp. 20                                       |
| ISO<br>10545-14          | Resistance to stain                             | -   | 5  |
| ISO<br>10545-13          | Chemical resistance                             | UB min.   | UA ULA UHA   |
| ISO<br>10545-8           | Coefficient of linear thermal-expansion         | -   | 60 $6,3 \times 10 \text{ c}'$  |
| ISO<br>10545-5           | Impact resistance                               | -   | 0,88   |
| EN<br>12825              | Static load                                     | -   | Centre 9,6 Kn<br>Centre point of sides 6,5 Kn<br>Diagonal 8,19 Kn (CLASSE 3) |
|                          | Dymanic laod capacity - hand object impact test | -   | Test not passed  |
|                          | Dymanic laod capacity - soft object impact test | -   | Test passed  |
| EN<br>1339               | Bendind strength - breaking force in N          | Kn 14,38  | classe 14  |
| ENV<br>12633             | Pendolum Test - Slip resistance                 | $> / = \text{CL1}$                                    | CL 2   |
| DIN<br>51130             | Slip resistance                                 | -   | R11  |
| DIN<br>51097             | Slip resistance                                 | -   | A + B + C min.   |
| DIN<br>51094             | Color resistance to light                       | Tiles must not produce<br>noticeable colour variation | Resistant  |
| DM 236/89<br>B.C.R.A.    | Slip resistance                                 | -   | $> 0,40$   |
| ASTM 1028-07<br>BOT 3000 | Slip resistance                                 | -   | $> 0,60 \text{ WET}$ $> 0,60 \text{ DRY}$<br>$> 0,42$                        |
| EN<br>13501-1            | Fire resistance                                 | -   | A1 - A1 FL   |

*where to install*  
**2CM PORCELAIN PAVERS**



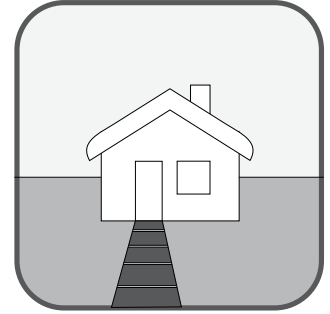
Sidewalk cafes



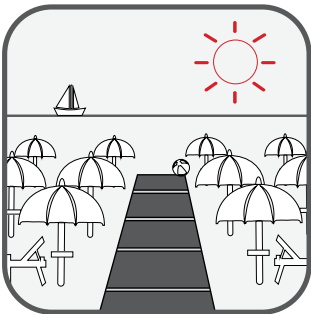
Walkways and pathways



Gardens and patios



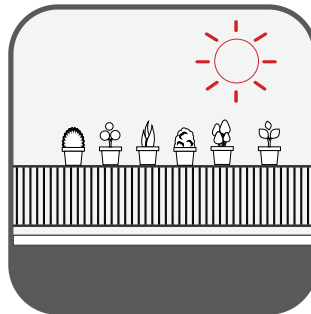
Garden paths



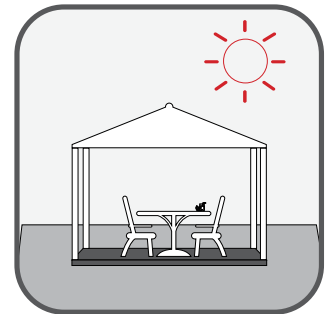
Beach resorts



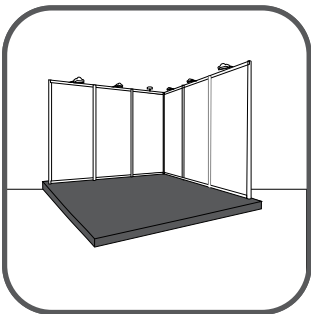
Swimming-pools



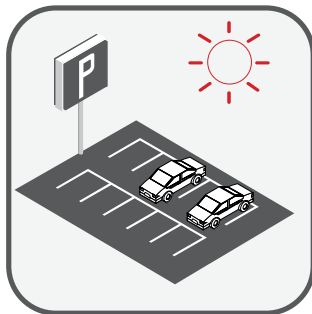
Terraces and balconies



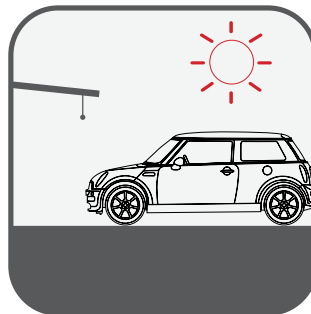
Gazebos



Exhibitions and events



Public parks



Public parkings

# why choose 2CM PORCELAIN PAVERS?



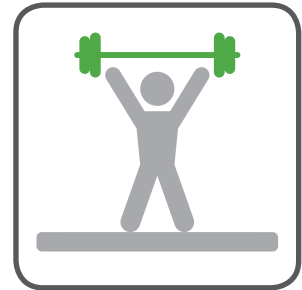
Thermal shock resistant.  
(-40°F - 210°F)



Superior in fire resistance  
and durability to wood tiles



Easy to clean. Stain,  
chemical and salt resistant



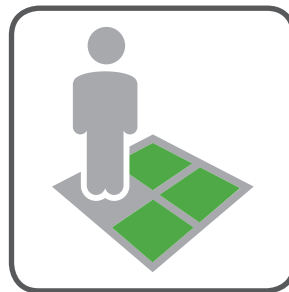
Superior in strength and  
impact resistance to  
ceramic tiles (supports over  
2000lb), lighter and easier  
to handle than concrete  
blocks



Virtually no maintenance



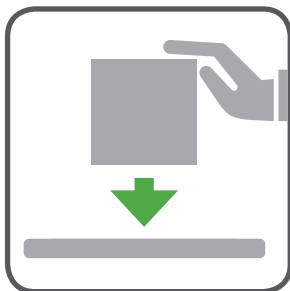
Slip resistant and quick  
draining



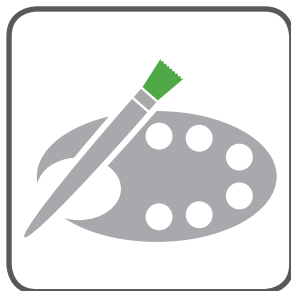
Easy to install



Removable and reusable  
POPA 2.0 is ideal both for  
temporary flooring and for  
permanent flooring



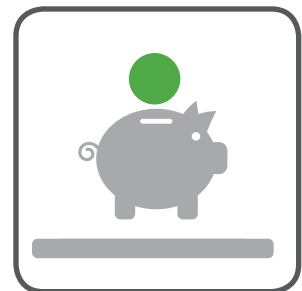
Versatile installation.  
Various installation methods  
including pedestal set,  
gravel and grass set.  
They offer endless  
opportunities for landscape  
design creativity in both  
domestic and commercial  
applications.



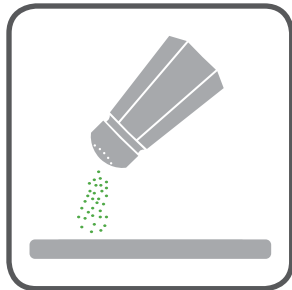
Fade resistant



Available in a broad range  
of colors/styles



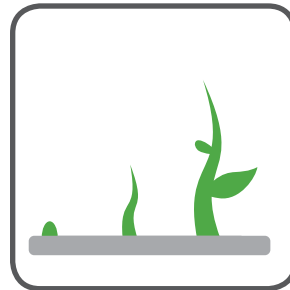
Massive over life cost  
savings more cost effective  
than grating or grid  
structures for elevated  
paving installations



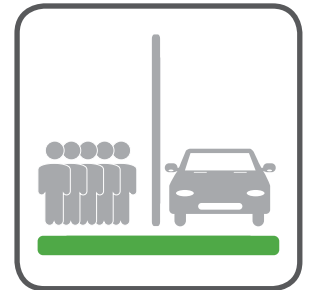
Resistant to salt corrosion.



Resistant to attack from mould, moss and verdigris treatments.



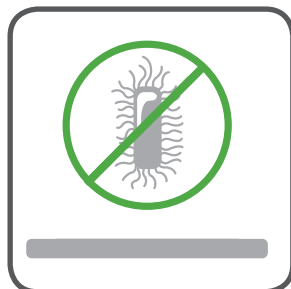
Resistant to efflorescence and other marks.



Durable: resistant to heavy vehicle and pedestrian traffic.



Frost-proof.



Hypoallergenic. No VOC.



Easy to sterilize.



Eco-friendly maintenance.



Easy to clean.



Recyclable and ecological.



New solution in extra-thick porcelain stoneware for outdoor trilling. 2 cm thick, colored fine porcelain stoneware slabs obtained from atomizing high-class clays, quartzes and metal oxides pressed at 400 kg/cm<sup>2</sup>, completely sintered at a temperature of 1200°C and then squared using a system of abrasive grinders.

