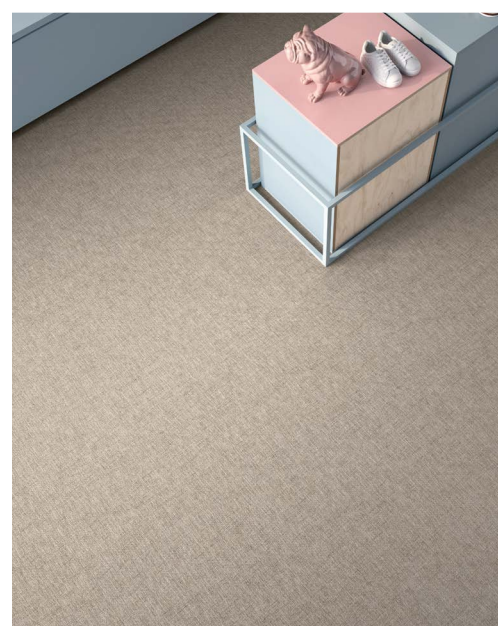




*Inspired By Nature,
Made Possible By...*

CANCOS
TILE & STONE

PORCELAIN STONEWARE



ELETEEC1224



| 12x24 |

ELETEEC24



| 24x24 |

ELETEECMOS22



| 2x2 mosaic: dark mix |

ELETEEC24D



| 24x24: dark deco |

ELETEECMOSHEX



| hexagon mosaic: dark mix |

ELETEECBN324



| 3x24 bullnose |

PORCELAIN STONEWARE



ELETEGR1224



| 12x24 |

ELETEGR24



| 24x24 |

ELETEGRMOS22



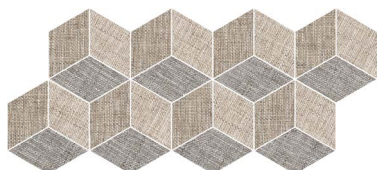
| 2x2 mosaic: dark mix |

ELETEGR24D



| 24x24: dark deco |

ELETEGRMOSHEX



| hexagon mosaic: dark mix |

ELETEGRBN324



| 3x24 bullnose |

PORCELAIN STONEWARE



ELETEPE1224



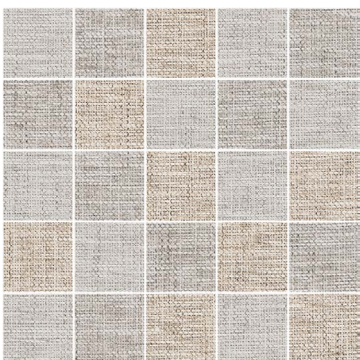
| 12x24 |

ELETEPE24



| 24x24 |

ELETEPEMOS22



| 2x2 mosaic: *light mix* |

ELETEPE24D



| 24x24: *light deco* |

ELETEPEMOSHEX



| hexagon mosaic: *light mix* |

ELETEPEBN324



| 3x24 bullnose |

PORCELAIN STONEWARE



ELETESA1224



| 12x24 |

ELETESA24



| 24x24 |

ELETESAMOS22



| 2x2 mosaic: *dark mix* |

ELETESAMOSHEX



| hexagon mosaic: *dark mix* |

ELETESA24D



| 24x24 dark deco |

ELETESABN324



| 3x24 bullnose |

PORCELAIN STONEWARE



ELETEWH1224



| 12x24 |

ELETEWH24



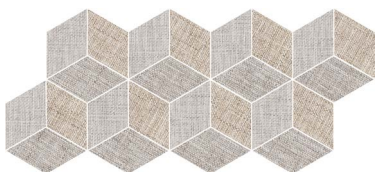
| 24x24 |

ELETEWHMOS22



| 2x2 mosaic: *light mix* |

ELETEWHMOSHEX



| hexagon mosaic: *light mix* |

ELETEWH24D



| 24x24: *light deco* |

ELETEWHBN324



| 3x24 bullnose |

Suggested Applications



Floor



Wall



Residential



Light Commercial



Heavy Commercial
*Wear can vary greatly, please consult with a professional.



Exterior



Pools

Installation Suggestions



Plank Installation*
*Install the offset the width of the plank. For professional installation, the use of leveling spacers for all plank and rectangular (ie. 12x24) format tiles is recommended.



EDGE:



Straight/Pressed



Rustic



Rectified

FINISH:

☒ Matte

☐ Polished

☐ Structured

☐ Honed

☐ Semi-Polished

☐ Other

Porcelain Type

☐ through-body

☐ color-bodied

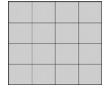
☐ glazed

☐ unglazed

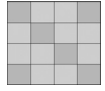
☐ double-loaded

☐ other

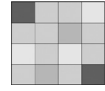
Shade Variation



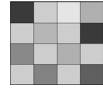
☐ V1
Uniform
Appearance



☒ V2
Slight
Variation



☐ V3
Moderate
Variation



☐ V4
Substantial
Variation

THICKNESS:

10mm

OF FACES:



Slip Resistance

DCOF

>.42



Values

0.42

0.65

Applications

Recommended Standard DCOF value
for wet/dry commercial flooring

Recommended Standard DCOF value
for ADA Ramps

DIN 51130

*R9: Industry Standard/ADA Requirements **R11: Recommended For Exteriors

☐ R9* (3-10°)

☒ R10 (10-19°)

☐ R11** (19-27°)

☐ R12 (27-35°)

☐ R13 (>35°)

DIN 51097

Class

Typical Applications

Critical Angle

☐ A

Barefoot, but mainly dry aisles and walkways, dry changing areas

≥12°

☐ B

Shower rooms, pool surrounds, wet changing areas, disinfectant spray areas (plus all Class A areas)

≥18°

☐ C

Areas constantly under water, e.g. steps into pools, foot baths, inclined pool surrounds, jacuzzis (plus all Class A&B areas)

≥24°

ASTM C-1028

ANSI A137.1

DIN 51097/51130

Scratch Resistance

MOH'S SCALE

UNI EN ISO

10545.6

MINERAL

1. Talc (Talc)

2. Gypsum (Fingernail)

3. Calcite (Penny)

4. Fluorite (Some Marbles)

5. Apatite (Knife Blade)

Industry standard ≤175mm²

6. Microline (Glass, Glazed Tile)

7. Quartz (Unglazed Porcelain)

8. Topaz (Granite)

9. Corundum (Ruby)

10. Diamond (Diamond)

Wear Resistance

PEI RATING

UNI EN ISO

10545.7

☐ Class 1: Walls only

☐ Class 2: Residential floors w/minimal abrasive traffic

☐ Class 3: Residential interiors/light commercial traffic

☐ Class 4: Medium commercial applications

☒ Class 5: All commercial applications/heavy traffic
*Wear can vary greatly. please consult with a professional.

Stain Resistance

ASTM C1378-04

UNI EN ISO

10545.14

3

- 5: Removed after 5 minutes (hot water running)
- 4: Removed by manual cleaning (weak detergent)
- 3: Removed by mechanical cleaning (strong detergent)
- 2: Removed by immersion (24 hrs in suitable solvent)
- 1: Stain not removed

Water Absorption

ASTM C-373

UNI EN ISO

10545.3



☒ Absorbs 0-.5%

Impervious
Interior/Exterior
Frost Resistant



☐ Absorbs .5-3%

Vitreous
Interior/Exterior
Frost Resistant



☐ Absorbs 3-7%

Semi-Vitreous
Indoor Use Only



☐ Absorbs 7% +

Non-Vitreous
Indoor Use Only

Breaking Strength

ASTM C648

UNI EN ISO

10545.4

PASS



Industry standard
should be greater than
250 lbs
or
50 N/MM²

Facial Dimension

ASTM C499-09

UNI EN ISO

10545.02

	Standard	Tolerance	Result
flatness	±5mm	±.5%	
thickness	±6mm	±.5%	
straightness	±4.5mm	±.5%	
squareness	±5.4mm	±.6%	
sides L/W	±1.1mm ±4.5mm	±.5%	

Chemical Resistance

ASTM C650

UNI EN ISO

10545.13



Allowances for:

result

Acid

Bases

Chemicals

Leed Information



REQUIREMENTS
FOR COMMERCIAL
INTERIORS/NEW
CONSTRUCTION

Sustainable Sites

Site selection

SS CREDIT 1

Heat Island Effect-non roof

Material with a solar reflectant index of at least 29.

1 Point

☐

Energy & Atmosphere

EA CREDIT 4

Green Power: Products that optimize energy performance for floors and walls using thermal conductivity. BTU-FT

1 Point

☐

Indoor Environmental Quality

Low-Emitting Materials-Flooring Systems

1 Point

IEQ CREDIT 3.1-7

Green Cleaning: Reducing occupants exposure to hazardous cleaning chemicals.

☐

IEQ CREDIT 4.1

Low Emitting Adhesives: Products less than 65 G/L VOC

☐

IEQ CREDIT 4.3

Low Emitting Materials: Flooring systems.

☐

Materials & Resources

M&R CREDIT 2

Construction Waste Management: Recycling salvaged construction waste in to new reusable materials.

1 Point

50%

☐

2 Points

70%

☐

M&R CREDIT 4.1-4.2

Recycled Content: The sum of post consumer plus 1/2 of the pre consumer reps at least 10-20% of total value of materials.

10%

☐

20%

☐

M&R CREDIT 5

Regional Materials: Materials manufactured within 500 miles of the project site.

10%

☐

20%

☐

Innovation in Design

ID CREDIT 1

Innovation in Design

Measurable exemplary environmental performance.

1-5 Points

☐

Type: Porcelain Stoneware

Product Line: Textile

The marketing name for this product is property of Concos Tile & Stone. This same product may be marketed under different names.